

# Staff Report

for the Board of Directors Meeting of August 28, 2019

**TO:** Board of Directors

**FROM:** Remleh Scherzinger, P.E., MBA, General Manager  
Kris Stepanian, MBA, Board Secretary

**DATE:** August 22, 2019

**SUBJECT:** Nevada Irrigation District Redistricting Project (FATR #2311)

---

---

***ADMINISTRATION***

**RECOMMENDATION:**

Receive a presentation from Redistricting Partners to provide an overview, preliminary findings, and a timeline.

**BACKGROUND:**

Since 2018, the District has annexed 43 parcels (878 acres) into the District. Under California Elections Code Division 21, Chapter 8, Section 22000.c it states “At the time of, or after, any annexation of territory to the district, the board of directors shall designate, by resolution, the division of which the annexed territory shall be a part.” As a result of Section 22000, this action will cause an imbalance in representation, resulting in the need for redistricting.

District staff searched for several months for redistricting consultants, only to find one. A contract was awarded to Redistricting Partners on June 7, 2019, in compliance with the District’s Procurement Policy (District Policy 3080 – Procurement), to assist the District in conducting an update to the by-district election system, in order to comply with the California Voting Rights Act (CVRA),

This item is in alignment with Goal No. 2 of the District’s Strategic Plan, as it supports stewardship of District resources and requires a collaborative and responsive relationship with our Local and Regional community.

**BUDGETARY IMPACT:**

There is no budgetary impact at this time. Annexation consulting fees were budgeted in the 2019 Budget (10115-52603).

Attachment: Presentation from Redistricting Partners





# Redistricting Overview

## Nevada Irrigation District

# What is Redistricting

## definition

Redistricting is the process of adjusting district lines every 10 years after the release of the US Census. The well known examples are Congress and the legislature.

Within the US, redistricting has become an extremely politicized process and been the subject of more high-profile Supreme Court decisions than any other part of our elections system.

# What is Gerrymandering

## The Gerrymander

The term Gerrymander came from a cartoon depicting a rather serpentine looking district created by Governor Elbridge Gerry in Massachusetts.

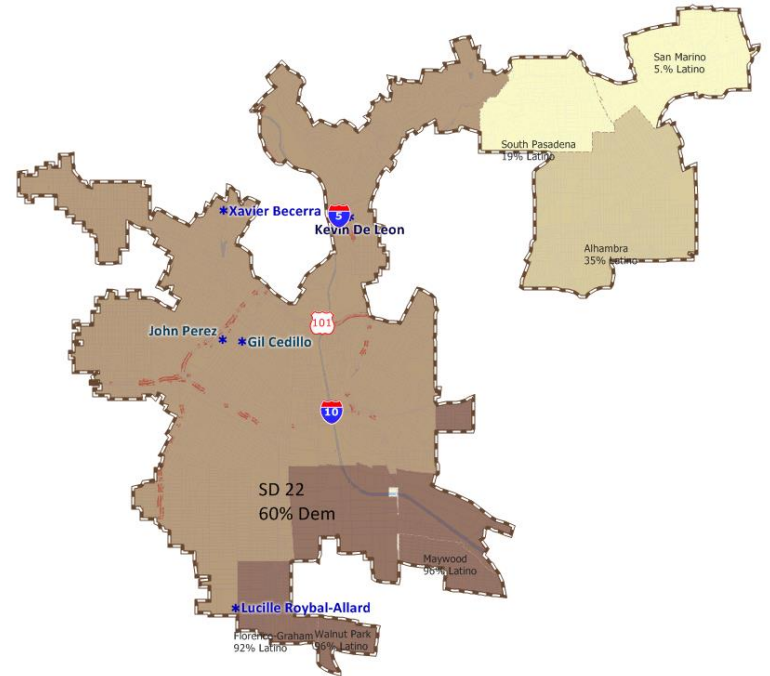


# What is Gerrymandering

## the Gerrymander

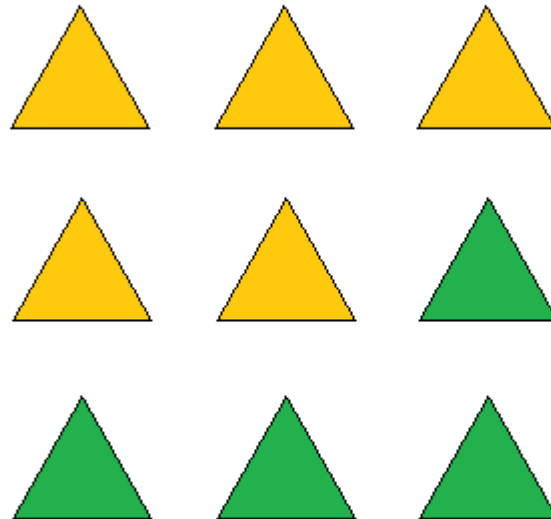
There are more recent examples of gerrymandering, even in California.

This 2001 Senate District is a great example.



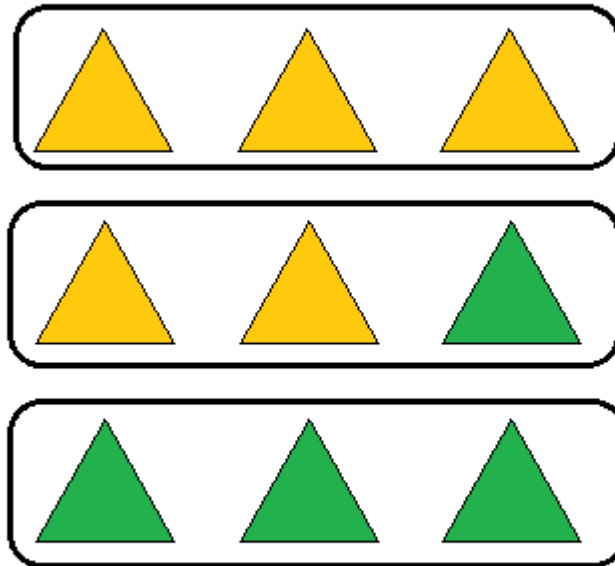
# What is Gerrymandering

How does gerrymandering work?



# What is Gerrymandering

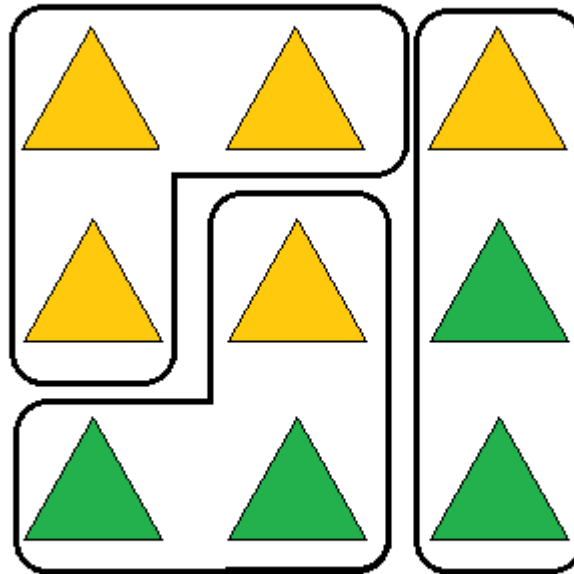
How does gerrymandering work?





# What is Gerrymandering

How does gerrymandering work?



# Traditional Redistricting Principles

Preventing a Districting from becoming a Gerrymander

There are a number of criteria that have been used nationally and upheld by courts.

- Relatively equal size - people, not citizens
- Contiguous – districts should not hop/jump
- Maintain “*communities of interest*”
- Follow city/county/local government lines
- Keep districts compact – appearance/function

# Traditional Redistricting Principles

Preventing a Districting from becoming a Gerrymander

There are a number of criteria that have been used nationally and upheld by courts.

- **Relatively equal size - people, not citizens**
- Contiguous – districts should not hop/jump
- Maintain “*communities of interest*”
- Follow city/county/local government lines
- Keep districts compact – appearance/function

# Traditional Redistricting Principles

Preventing a Districting from becoming a Gerrymander

There are a number of criteria that have been used nationally and upheld by courts.

- Relatively equal size - people, not citizens
- **Contiguous – districts should not hop/jump**
- Maintain “*communities of interest*”
- Follow city/county/local government lines
- Keep districts compact – appearance/function

# Traditional Redistricting Principles

Preventing a Districting from becoming a Gerrymander

There are a number of criteria that have been used nationally and upheld by courts.

- Relatively equal size - people, not citizens
- Contiguous – districts should not hop/jump
- **Maintain “*communities of interest*”**
- Follow city/county/local government lines
- Keep districts compact – appearance/function

# Communities of Interest

Bringing like people together for representation

What is a community of interest includes ethnic and language minorities and other groups.

- Communities covered by the Voting Rights Act
  - Latinos
  - Asians
  - African Americans

While race is a community of interest, it cannot be the *predominant factor* in drawing districts.

# Communities of Interest

Bringing like people together for representation

What is a community of interest includes ethnic and language minorities and other groups.

- Other Communities, example are:
  - People living near an industry (farming, higher education, manufacturing)
  - Senior Citizens or Students
  - Downtown / Urban
  - Rural or Agricultural
  - Homeowners or Renters

# Traditional Redistricting Principles

Preventing a Districting from becoming a Gerrymander

There are a number of criteria that have been used nationally and upheld by courts.

- Relatively equal size - people, not citizens
- Contiguous – districts should not hop/jump
- Maintain “*communities of interest*”
- **Follow city/county/local government lines**
- Keep districts compact – appearance/function



# Traditional Redistricting Principles

Preventing a Districting from becoming a Gerrymander

There are a number of criteria that have been used nationally and upheld by courts.

- Relatively equal size - people, not citizens
- Contiguous – districts should not hop/jump
- Maintain “*communities of interest*”
- Follow city/county/local government lines
- **Keep districts compact – appearance/function**

# Nevada Irrigation District

## Preliminary Findings

Based on GIS Files received by from the district the 2010 Census population is 100,366.

This population is used for the determination of the target size of a district, and the “equal population” calculations that should not exceed 10% from the largest to smallest District.

**Median Population: 20,073**

# Nevada Irrigation District

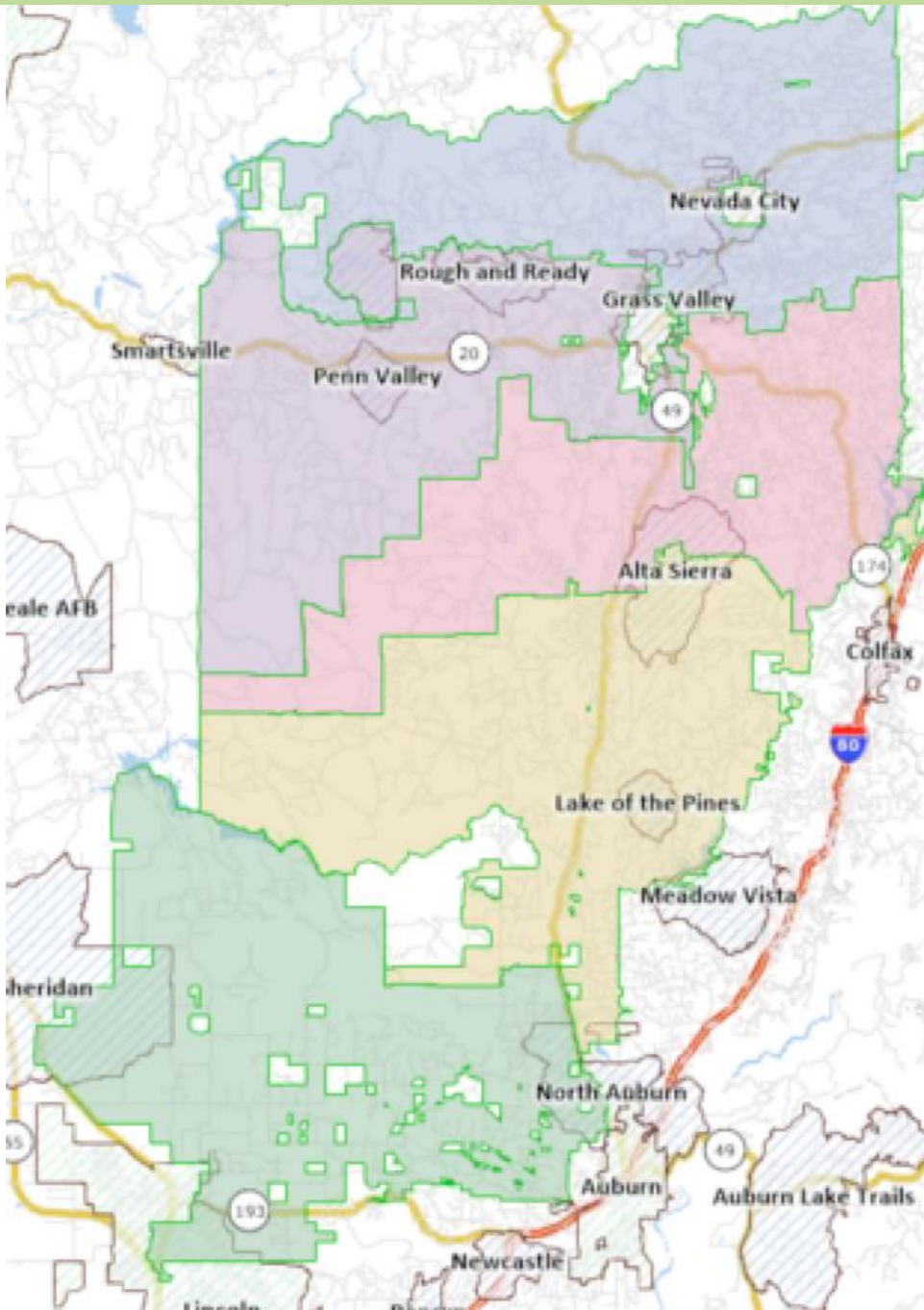
## Preliminary Findings

For determining ethnicity of a district we use the American Community Survey calculations of Citizen Voting Age Population or “CVAP” which is also sometimes called “eligible voters population”

- CVAP: 82,684
- Asian CVAP: 1,361
- Latino CVAP: 5,152
- Black CVAP: 518
- White CVAP: 73,713



# District Boundaries



# Nevada Irrigation District

## What's Next

Public meetings will be held to obtain input on communities of interest and receive feedback on potential districting plans prior to board adoption

Input can be provided in public meetings or using our “Community of Interest” Worksheet.



# Nevada Irrigation District

## What's Next

Public meetings will be held to obtain input on communities of interest and receive feedback on potential districting plans prior to board adoption

Aug 28	1 <sup>st</sup> Public Meeting
Sept 11	2 <sup>nd</sup> Public Meeting
<i>Sept 18</i>	<i>Initial draft maps published</i>
Sept 25	3 <sup>rd</sup> Public Meeting. Draft Map Review
<i>Oct 2</i>	<i>Publish amended draft maps (if any)</i>
Oct 9	4 <sup>th</sup> Public Meeting
<i>Oct 16</i>	<i>Publish final map</i>
Oct 23	Adoption



# REDISTRICTING PARTNERS