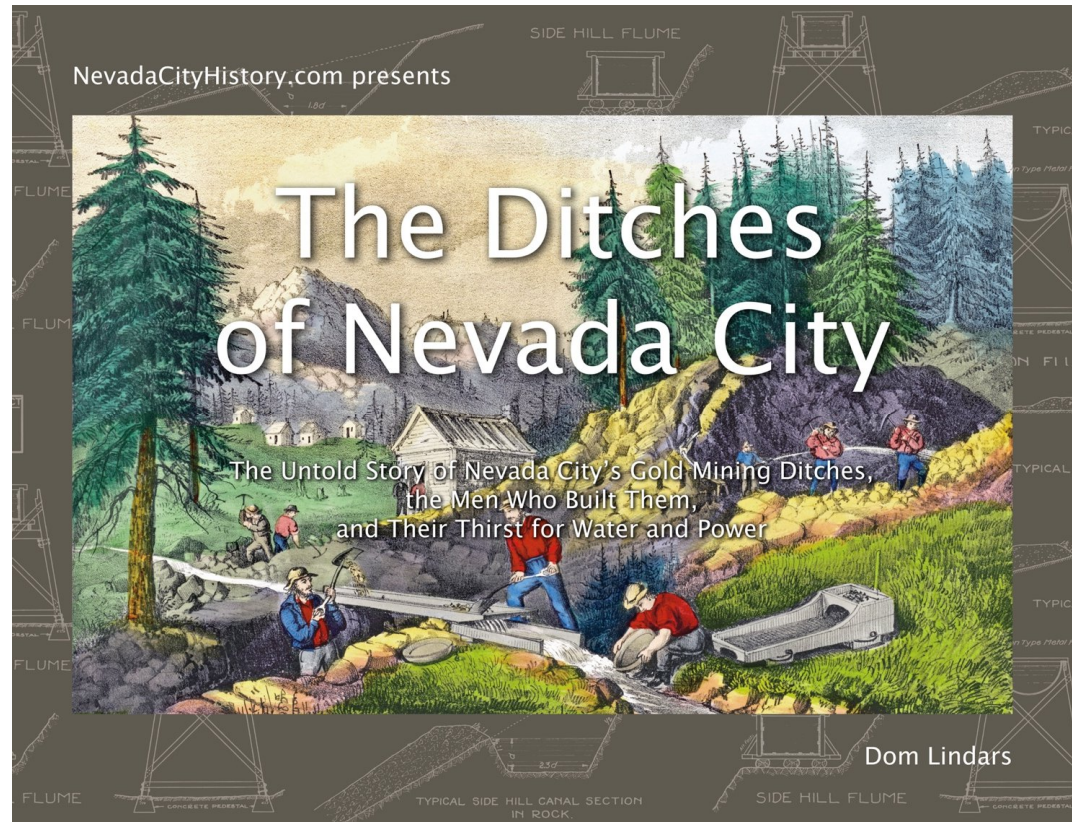


The Ditches of Nevada City by Dom Lindars

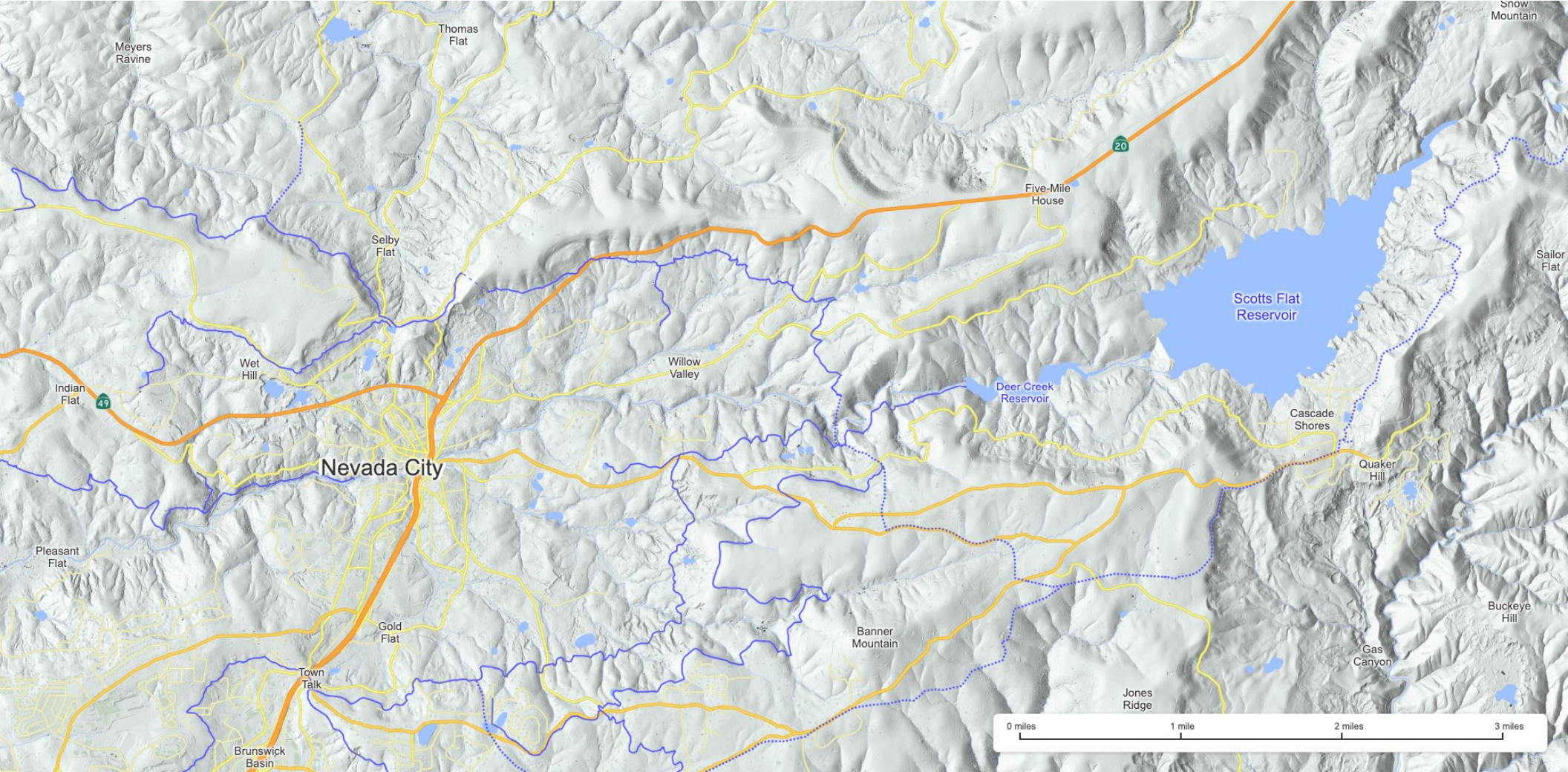
- A history book about where the water came from for gold mining around Nevada City.
- Includes 35 in-depth biographies of Nevada City miners and ditch builders, including US senators, William Morris Stewart and Aaron Sargent.
- More than 200 historic photos, 300+ modern photos, and 75 hand-crafted lidar-based maps.
- Available in hardcover at local stores in Nevada City and Grass Valley. Plus, in eBook on [Amazon](https://www.amazon.com) and [Apple Books](https://books.apple.com).



- Self-published, 884 pages, \$165.
- Go explore the maps online at [nevadacityhistory.com](https://www.nevadacityhistory.com)

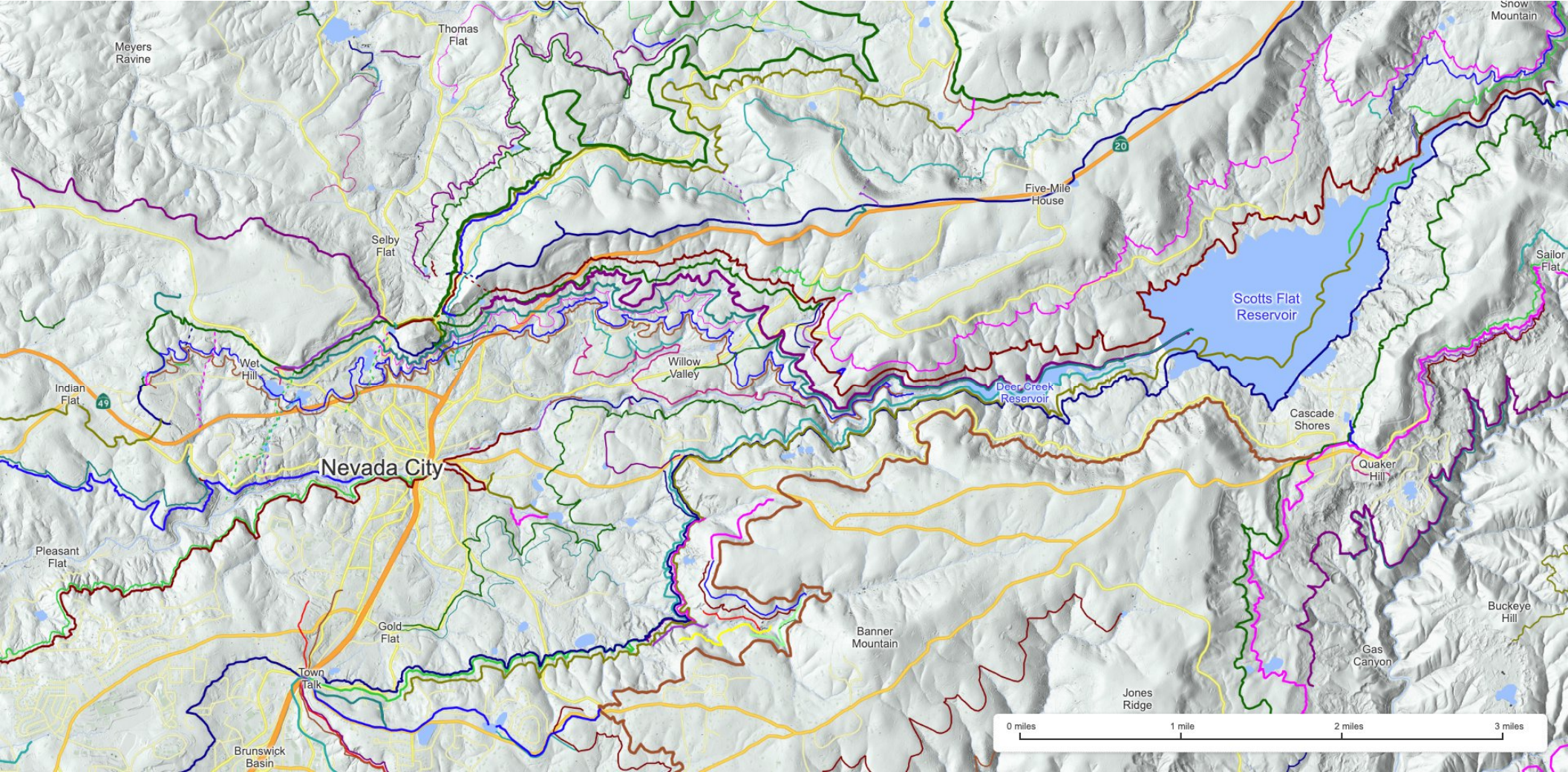
Today's NID Canal Network - Around Nevada City

This shows a small fraction of NID's 460+ miles of managed canals, pipelines and flumes – Click [here](#) to explore this map.



The Historical Ditch Network - Around Nevada City

This shows about half of the 800+ miles of old ditches, flumes and pipelines across Nevada County that predate NID – Click [here](#) to explore this map.



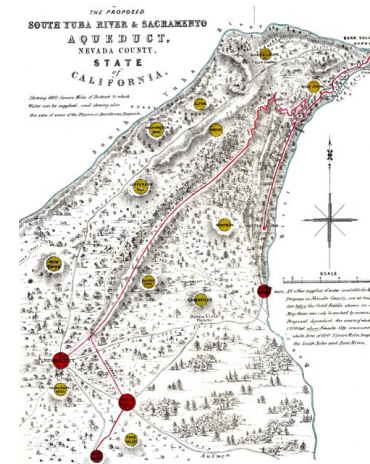
The History of Water Around Nevada County

- An in-depth look at the history of miners, businesses and families in Nevada City, including the fighting city fires, and the city water supply overcoming ice blockades through the decades.
- Explains the growing need for water by new gold mining technologies invented in Nevada City, like hydraulic mining.
- Ditch surveying, flumes & construction techniques from the 1850s.
- Traces the origins of various local neighborhoods and the 100+ mining ditches built to support them, including Nevada City, Willow Valley, Gold Flat, Selby Flat (near Sugar Loaf Mountain), Rough and Ready, Randolph Flat (now Bitney Corner), Alpha, Omega, Blue Tent, Cement Hill, Hirschman's Pond, Manzanita Diggings, and Scotts Flat.
- The story of the South Yuba Canal Company, from its beginnings with the Snow Mountain ditches, to the construction of the South Yuba Canal and its oppressive water monopoly across Nevada County.
- 1870-80s development of ditches to power all the hard rock mines.
- The Sawyer Decision in 1884 and the end of hydraulic mining.
- The emergence of PG&E from its Nevada City roots.
- Aubrey Wisker and his team's struggle to bring NID into existence.



Hydraulic Mining at Blue Tent in the 1870s

Lennon flume of the South Yuba Canal in Bear Valley



A highly inaccurate map of the proposed South Yuba Canal to sell stock in England from 1854



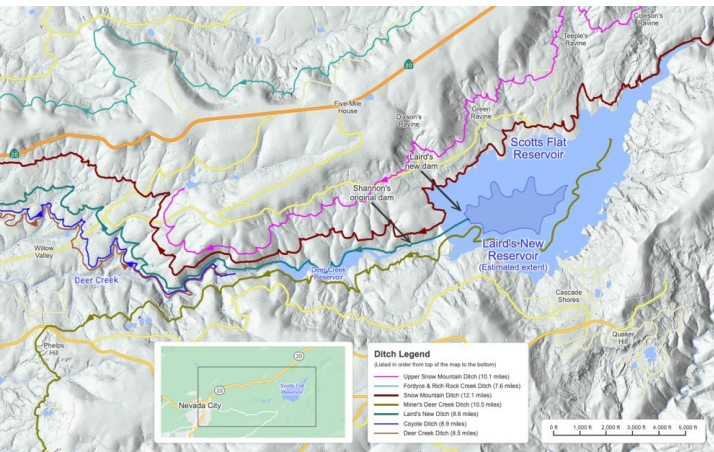
Big Reservoir or Sugar Loaf Reservoir in 1920



Deer Creek Reservoir Dam in January 2023



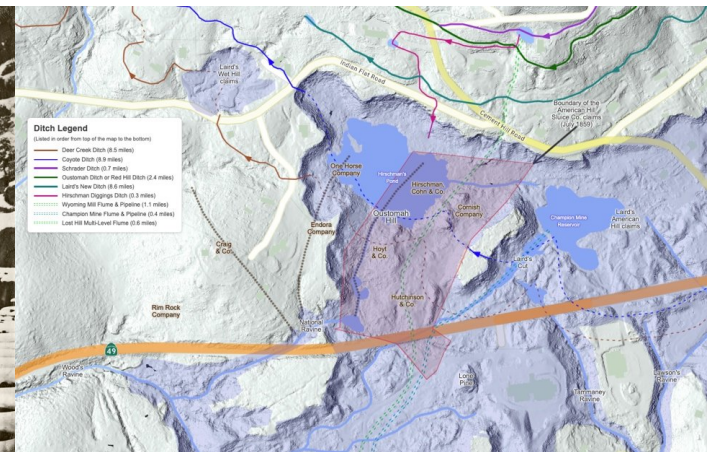
Broad Street, Nevada City in 1852



Amos Laird's dam failure and the flood of February 1857



The flume of the South Yuba Canal in the winter of 1884



Mining claims around Hirschman's Pond during the 1850s

Thank You

- My thanks to the NID board for the opportunity to share some of this history.
 - A big thank you to Jennifer Hanson for her support in helping this book along.
 - And to Susan Lauer for help finding various old photos and illustrations from the archives.
 - Also, to Ken Hart, who got me started with some ditch exploration back in 2016.
-
- If anyone at NID would like to hear more about my research or the history of our ditches, I would love to share.
 - Please contact info@nevadacityhistory.com.

