

# Staff Report

**TO:** Board of Directors

**FROM:** Jennifer Hanson, General Manager  
Kris Stepanian, Board Secretary

**DATE:** March 9, 2022

**SUBJECT:** Redistricting 2021-2022

---

---

## ***ADMINISTRATION***

### **RECOMMENDATION:**

Review preliminary maps, conduct public hearing and consider adoption of Resolution 2022-12 – Adjustment of Division Boundaries.

### **BACKGROUND:**

On January 26, 2022, the Board of Directors reviewed and provided input regarding preliminary draft maps, known as Draft Maps A, B and C, prepared by Redistricting Partners. Following discussion and input from the public, an additional draft map was requested, known as Draft Map D.

On February 9, 2022, the Board of Directors again reviewed Draft Maps A, B, and C and Draft Map D. Following discussion and input from the public, an additional draft map was requested, known as Draft Map E. In sum, five draft maps have been prepared, made available publicly, and are being presented to the public and Board today for their consideration.

Redistricting is the process of adjusting division lines approximately every 10 years after the release of the US Census. Redistricting Partners is assisting the District in conducting a redistricting update in order to comply with the California Voting Rights Act and the Irrigation District Act. Traditional redistricting principles will be used in this update and will help to ensure that the District divisions are:

- Relatively equal in size – people, not citizens
- Contiguous – district should not hop/jump
- Maintain “communities of interest”
- Follow city/county/local government lines
- Keep compact – in appearance/function

NID's previous effort at redistricting was stalled during the Board meeting on October 23, 2019. In 2020, the then-anticipated Census results were delayed due to the COVID-19 pandemic. The District has since re-engaged in the redistricting process, and outlined below is an estimated timeline for completion:

- January 26, 2022 – Draft Maps Presentation
- February 9, 2022– Draft Maps Revision (s)
- March 9, 2022 – Final Board Vote on District Maps

**BUDGETARY IMPACTS:**

None - This item is budgeted in the approved 2022 Budget under Management – Consulting Fees (10115-52603).

Attachments: (2)

- Resolution 2022-12 - Adjustment of Division Boundaries
- PowerPoint Presentation from Redistricting Partners



**RESOLUTION NO. 2022-12**  
**OF THE BOARD OF DIRECTORS OF THE NEVADA IRRIGATION DISTRICT**

**ADJUSTMENT OF DIVISION BOUNDARIES**

**WHEREAS**, Nevada Irrigation District Board of Directors are elected by a division-based electoral system; and

**WHEREAS**, The Irrigation District Act, Water Code section 21605 and Elections Code 22000(a) requires Nevada Irrigation District to adjust division boundaries by resolution after each federal decennial census; and

**WHEREAS**, the U.S. Census Bureau released its data collected in the 2020 decennial Census in the second half of 2021; and

**WHEREAS**, pursuant to Elections Code 22000 in adjusting the boundaries of the divisions, the Board may and has given consideration to the following factors: (1) topography, (2) geography, (3) cohesiveness, contiguity, integrity, and compactness of territory, and (4) community of interests of the division; and

**WHEREAS**, pursuant to Elections Code 22001, before adjusting the boundaries of a division, at least one public hearing on the proposal to adjust division boundaries must be provided at least once by the District before the public hearing at the open meeting when the Board votes to adopt a reapportioned map; and

**WHEREAS**, Nevada Irrigation District's consultant, Redistricting Partners, prepared preliminary draft maps for the Board to consider, all of which were shared during public meetings where the public was afforded the opportunity to comment and provide testimony; and

**WHEREAS**, proposed maps known as Draft Map A, Draft Map B and Draft Map C were made available to the public on Nevada Irrigation District's website and discussed during an open and public Board meeting, providing opportunities for public testimony, on January 26, 2022; and

**WHEREAS**, an additional proposed map, known as Draft Map D, in addition to the Draft Maps A through C were made available to the public on Nevada Irrigation District's website and discussed during an open and public Board meeting, providing opportunities for public testimony, on February 9, 2022; and

**WHEREAS**, an additional proposed map, known as Draft Map E, in addition to Draft Maps A through D, were made available to the public on Nevada Irrigation District's website and discussed during an open and public Board meeting, providing

opportunities for public testimony, on March 9, 2022; and

**WHEREAS**, all draft maps considered by Nevada Irrigation District comply with Elections Code, the Irrigation District Act and other applicable laws.

**NOW, THEREFORE, BE IT HEREBY RESOLVED**, by the Board of Directors of Nevada Irrigation District:

- (1) The above recitals are true and correct and are adopted herein as findings of the Board of Directors;
- (2) Having considered public testimony and concluded public hearings, the Board determines and hereby adopts Draft Map [redacted] as its final map, attached hereto as Exhibit A (the “Final Map”);
- (3) Pursuant to Elections Code section 22002 the effective date of this adjustment of division boundaries is the date of passage of this Resolution; and
- (4) The General Manager is authorized and directed to execute appropriate documents, if any, to satisfy and implement this adjustment of division boundaries consistent with the Final Map for Nevada Irrigation District.

\* \* \* \* \*

**PASSED AND ADOPTED** by the Board of Directors of the Nevada Irrigation District at a regular meeting held on the 9th day of March 2022 by the following vote:

<b>AYES:</b>	Directors:
<b>NOES:</b>	Directors:
<b>ABSENT:</b>	Directors:
<b>ABSTAINS:</b>	Directors:

---

President of the Board of Directors

**Attest:**

---

Secretary to the Board of Directors



**NID**

Nevada Irrigation District

Redistricting 2021-2022

# What is Redistricting

## definition

Redistricting is the process of adjusting district lines every 10 years after the release of the US Census. The well known examples are Congress and the legislature.

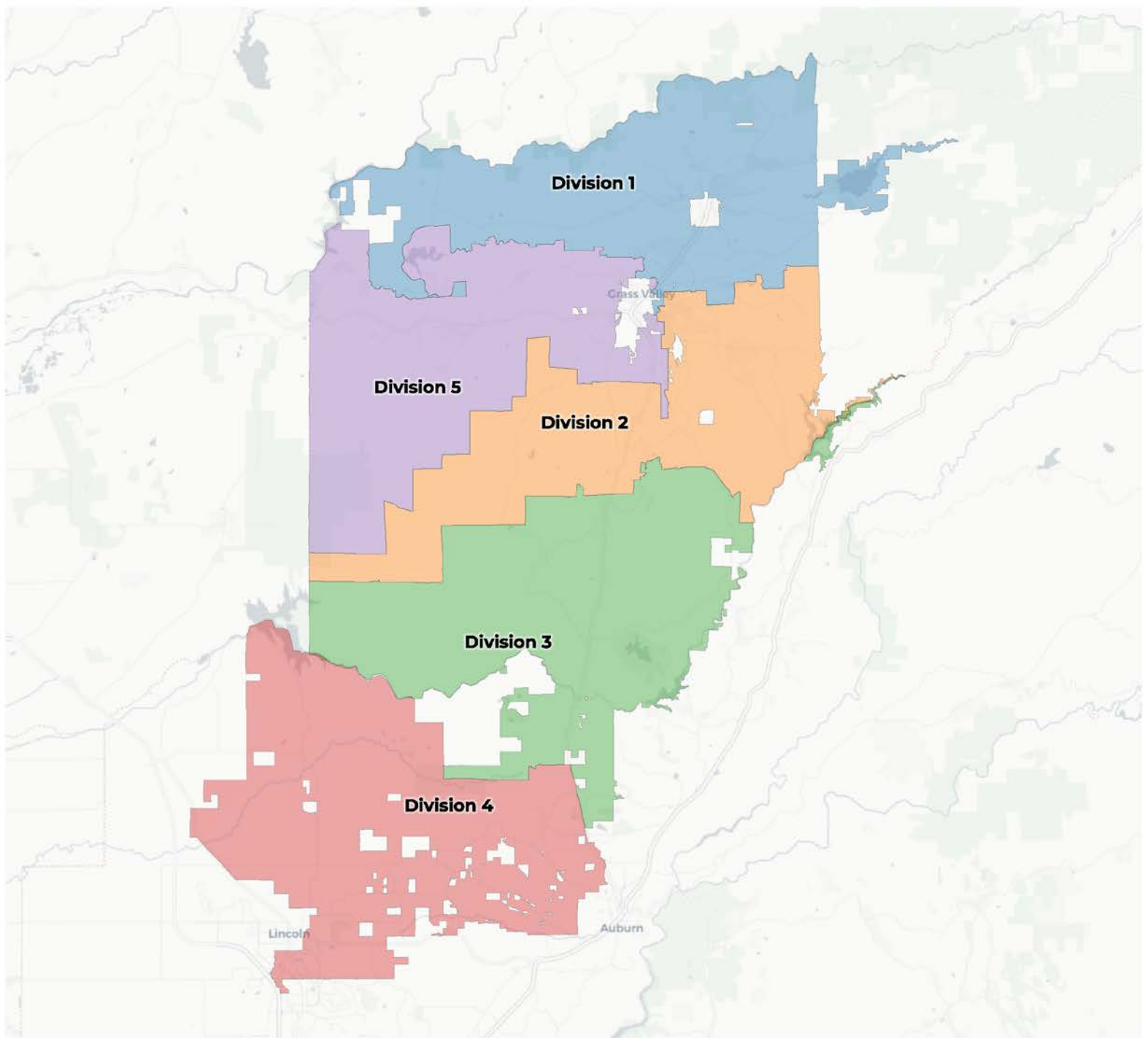
Within the US, redistricting has become an extremely politicized process and been the subject of more high-profile Supreme Court decisions than any other part of our elections system.

# Traditional Redistricting Principles

Preventing a Districting from becoming a Gerrymander

There are a number of criteria that have been used nationally and upheld by courts.

- Relatively equal size - people, not citizens
- Contiguous – districts should not hop/jump
- Maintain “*communities of interest*”
- Follow city/county/local government lines
- Keep districts compact – appearance/function





**2020 Census**

	Division 1	Division 2	Division 3	Division 4	Division 5
Population	20,643	17,734	17,860	24,209	18,539
Deviation	846	-2,063	-1,937	4,412	-1,258
Deviation %	4.3%	-10.4%	-9.8%	22.3%	-6.4%
Other	18,522	16,033	16,019	19,517	16,618
Other %	89.7%	90.4%	89.7%	80.6%	89.6%
Latino	1,782	1,420	1,497	3,669	1,620
Latino %	8.6%	8.0%	8.4%	15.2%	8.7%
Asian	253	212	260	777	233
Asian %	1.2%	1.2%	1.5%	3.2%	1.3%
Black	86	69	84	246	68
Black %	0.4%	0.4%	0.5%	1.0%	0.4%

**Citizen Voting Age Population (CVAP)**

	Division 1	Division 2	Division 3	Division 4	Division 5
Total CVAP	15,884	14,939	14,483	19,535	14,699
Other CVAP	14,757	14,194	13,221	16,846	13,532
Other CVAP %	92.9%	95.0%	91.3%	86.2%	92.1%
Latino CVAP	980	622	986	1,519	828
Latino CVAP %	6.2%	4.2%	6.8%	7.8%	5.6%
Asian CVAP	48	77	164	935	142
Asian CVAP %	0.3%	0.5%	1.1%	4.8%	1.0%
Black CVAP	99	46	112	234	197
Black CVAP %	0.6%	0.3%	0.8%	1.2%	1.3%

**2020 Census**

	Division 1	Division 2	Division 3	Division 4	Division 5
Population	20,643	17,734	17,860	24,209	18,539
Deviation	846	-2,063	-1,937	4,412	-1,258
Deviation %	4.3%	-10.4%	-9.8%	22.3%	-6.4%
Other	18,522	16,033	16,019	19,517	16,618
Other %	89.7%	89.9%	89.7%	80.6%	89.6%
Latino					1,620
Latino %					8.7%
Asian	253	212	260	777	233
Asian %	1.2%	1.2%	1.5%	3.2%	1.3%
Black	86	69	84	246	68
Black %	0.4%	0.4%	0.5%	1.0%	0.4%

**Deviation is 32.7%**

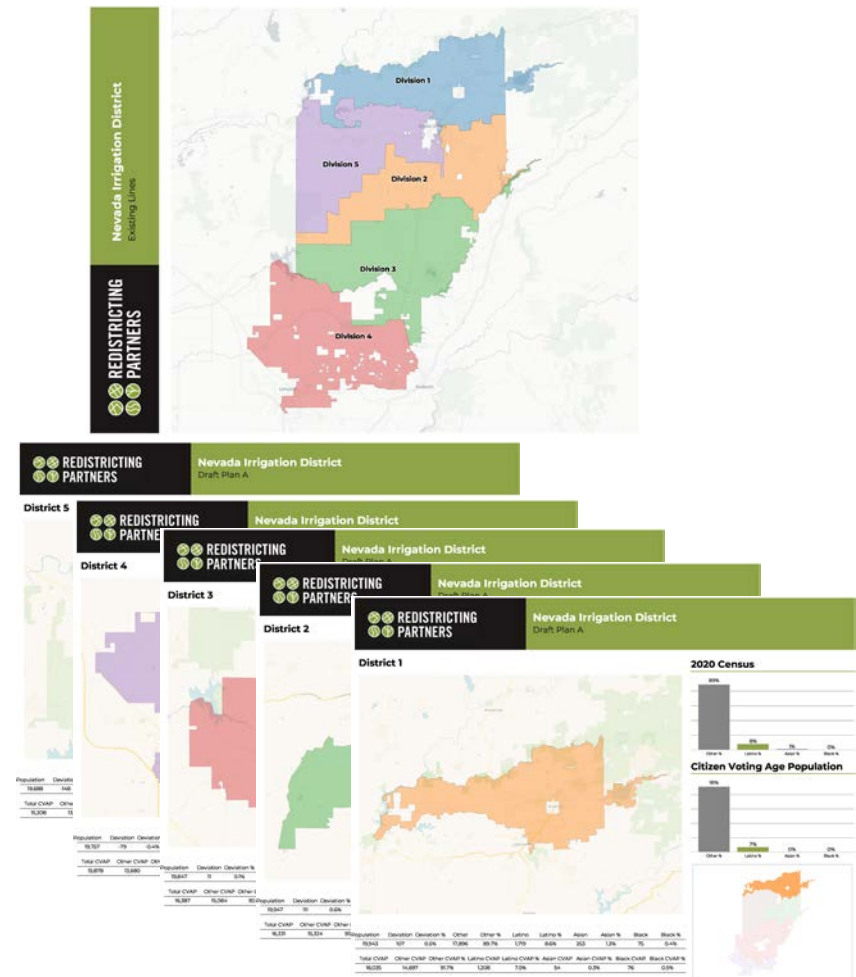
**Citizen Voting Age Population (CVAP)**

	Division 1	Division 2	Division 3	Division 4	Division 5
Total CVAP	15,884	14,939	14,483	19,535	14,699
Other CVAP	14,757	14,194	13,221	16,846	13,532
Other CVAP %	92.9%	95.0%	91.3%	86.2%	92.1%
Latino CVAP	980	622	986	1,519	828
Latino CVAP %	6.2%	4.2%	6.8%	7.8%	5.6%
Asian CVAP	48	77	164	935	142
Asian CVAP %	0.3%	0.5%	1.1%	4.8%	1.0%
Black CVAP	99	46	112	234	197
Black CVAP %	0.6%	0.3%	0.8%	1.2%	1.3%

# Draft Map Plans

Each draft plan is provided with both a PDF and Online Web-based format

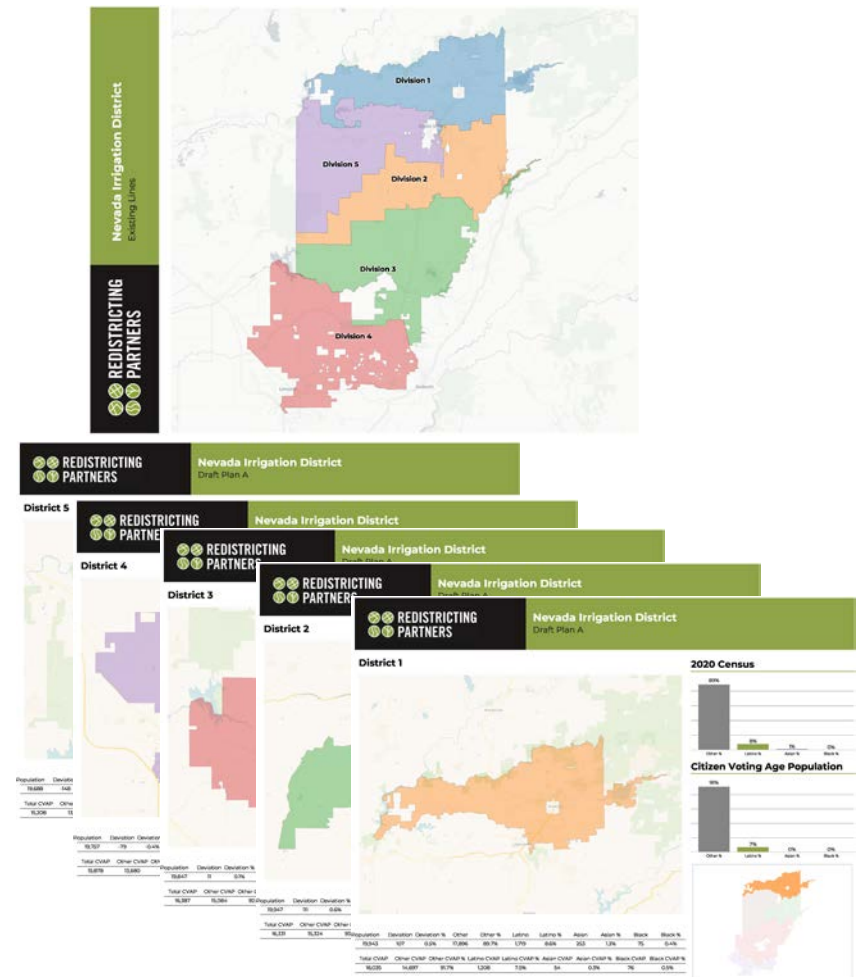
- Draft Map A– Minimal change
- Draft Map B – Unifying cities
- Draft Map C – Revision of A
- Draft Map D – Hybrid of B and C
- Draft Map E – Hybrid of A and B

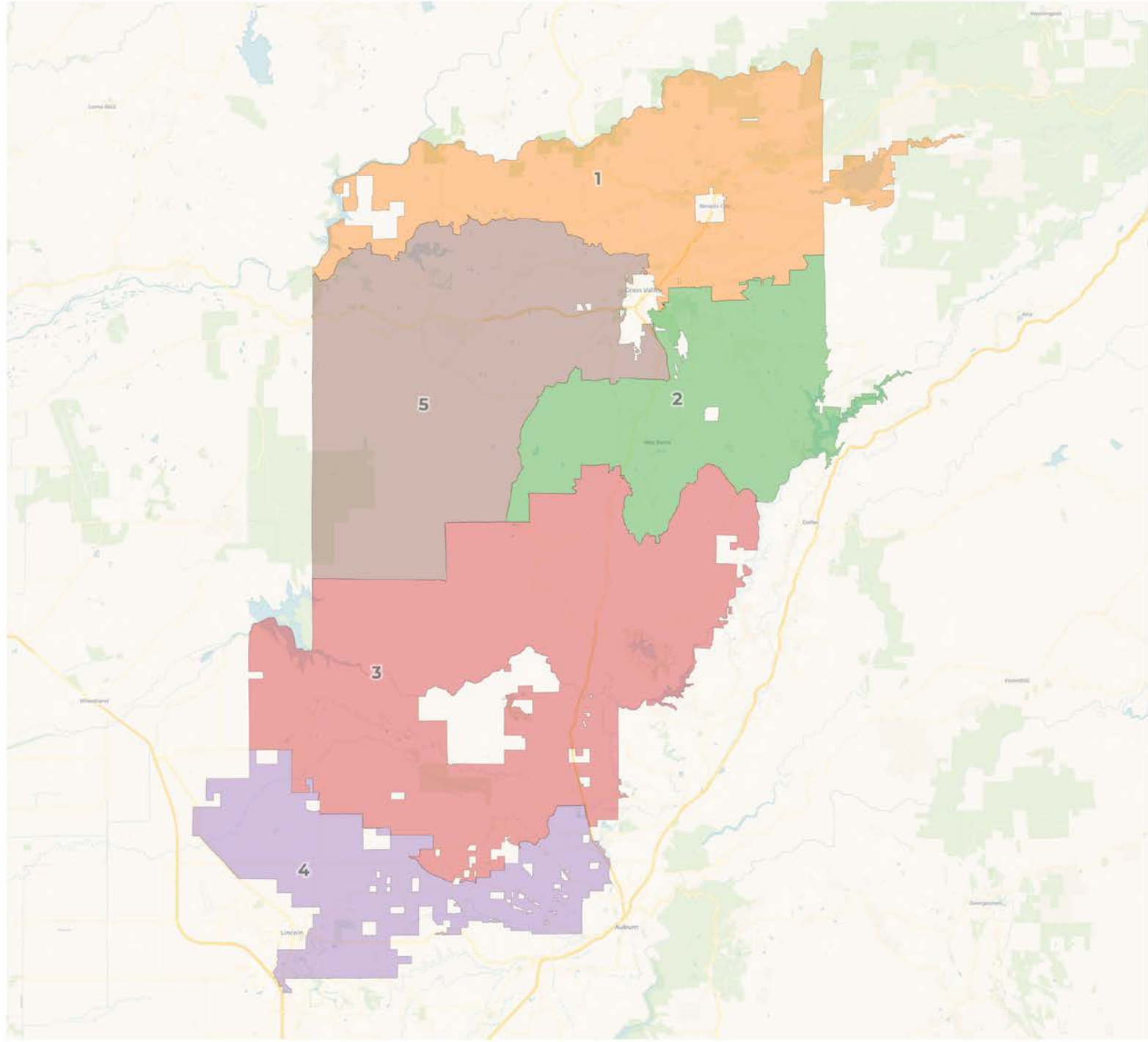


# Draft Map Plans

Each draft plan is provided with both a PDF and Online Web-based format

- **Draft Map A– Minimal change**
- Draft Map B – Unifying cities
- Draft Map C – Revision of A
- Draft Map D – Hybrid of B and C
- Draft Map E – Hybrid of A and B





**2020 Census**

	1	2	3	4	5
Population	19,943	19,947	19,847	19,757	19,688
Deviation	107	111	11	-79	-148
Deviation %	0.5%	0.6%	0.1%	-0.4%	-0.7%
Other	17,896	18,075	17,622	15,641	17,639
Other %	89.7%	90.6%	88.8%	79.2%	89.6%
Latino	1,719	1,566	1,830	3,178	1,721
Latino %	8.6%	7.9%	9.2%	16.1%	8.7%
Asian	253	239	302	699	242
Asian %	1.3%	1.2%	1.5%	3.5%	1.2%
Black	75	67	93	239	86
Black %	0.4%	0.3%	0.5%	1.2%	0.4%

**Citizen Voting Age Population (CVAP)**

	1	2	3	4	5
Total CVAP	16,035	16,331	16,387	15,878	15,208
Other CVAP	14,697	15,324	15,084	13,680	13,922
Other CVAP %	91.7%	93.8%	92.0%	86.2%	91.5%
Latino CVAP	1,208	844	1,146	1,151	1,029
Latino CVAP %	7.5%	5.2%	7.0%	7.2%	6.8%
Asian CVAP	54	99	111	761	135
Asian CVAP %	0.3%	0.6%	0.7%	4.8%	0.9%
Black CVAP	76	64	46	286	122
Black CVAP %	0.5%	0.4%	0.3%	1.8%	0.8%

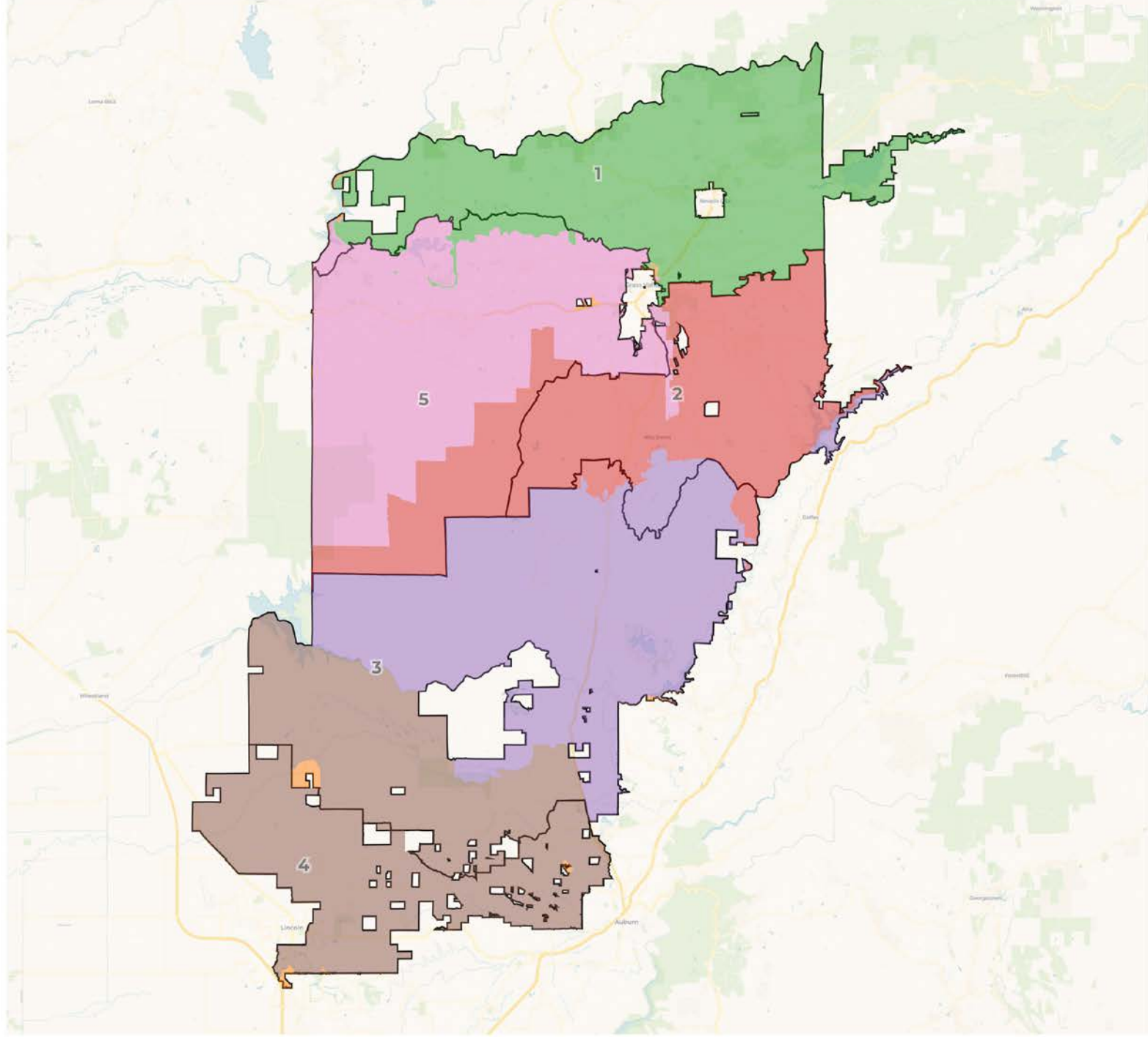
**2020 Census**

	1	2	3	4	5
Population	19,943	19,947	19,847	19,757	19,688
Deviation	107	111	11	-79	-148
Deviation %	0.5%	0.6%	0.1%	-0.4%	-0.7%
Other	17,896	18,075	17,622	15,641	17,639
Other %	89.7%	90.6%	88.8%	79.2%	89.6%
Latino					1,721
Latino %					8.7%
Asian	253	239	302	699	242
Asian %	1.3%	1.2%	1.5%	3.5%	1.2%
Black	75	67	93	239	86
Black %	0.4%	0.3%	0.5%	1.2%	0.4%

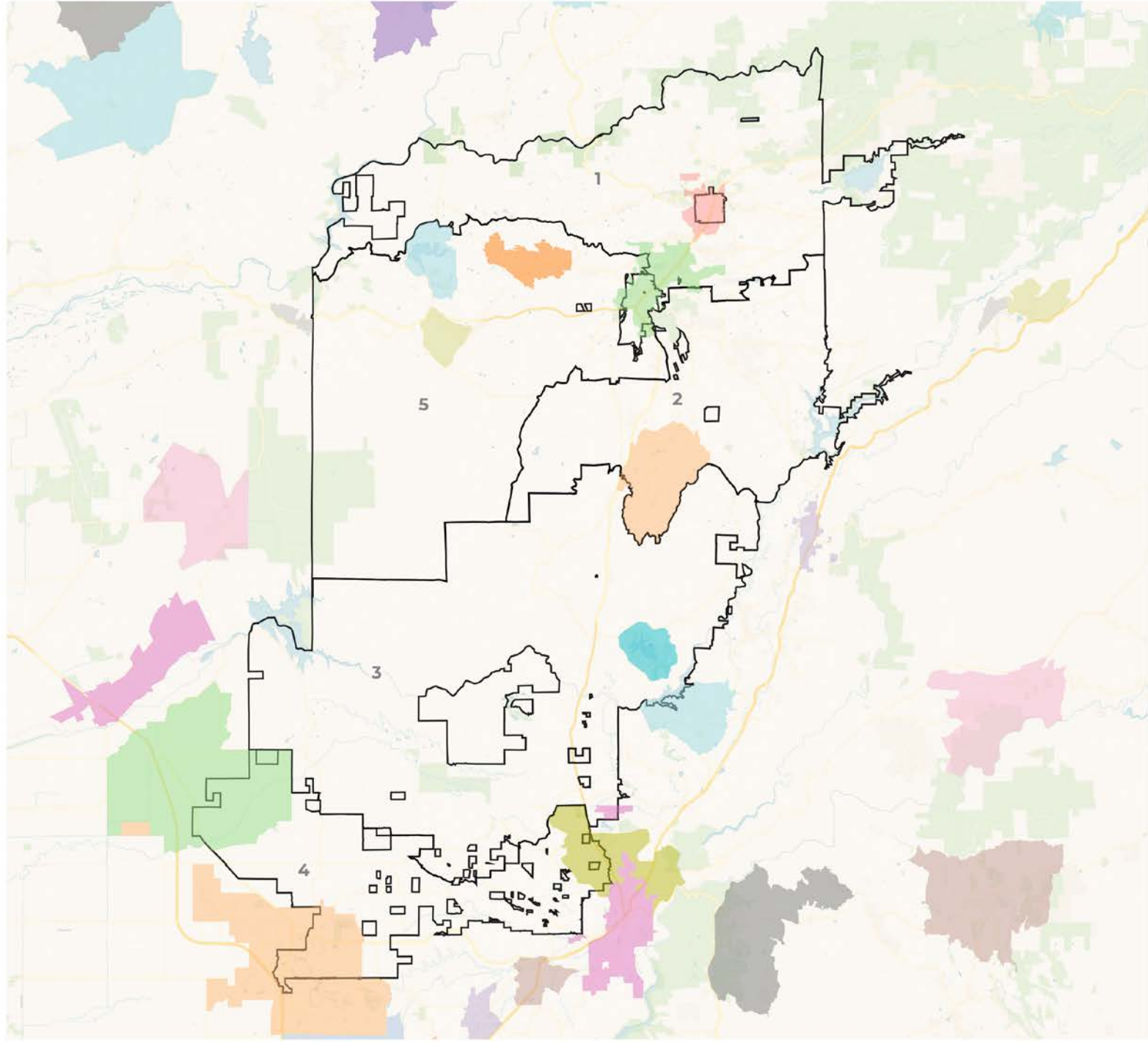
**Deviation is 1.3%**

**Citizen Voting Age Population (CVAP)**

	1	2	3	4	5
Total CVAP	16,035	16,331	16,387	15,878	15,208
Other CVAP	14,697	15,324	15,084	13,680	13,922
Other CVAP %	91.7%	93.8%	92.0%	86.2%	91.5%
Latino CVAP	1,208	844	1,146	1,151	1,029
Latino CVAP %	7.5%	5.2%	7.0%	7.2%	6.8%
Asian CVAP	54	99	111	761	135
Asian CVAP %	0.3%	0.6%	0.7%	4.8%	0.9%
Black CVAP	76	64	46	286	122
Black CVAP %	0.5%	0.4%	0.3%	1.8%	0.8%



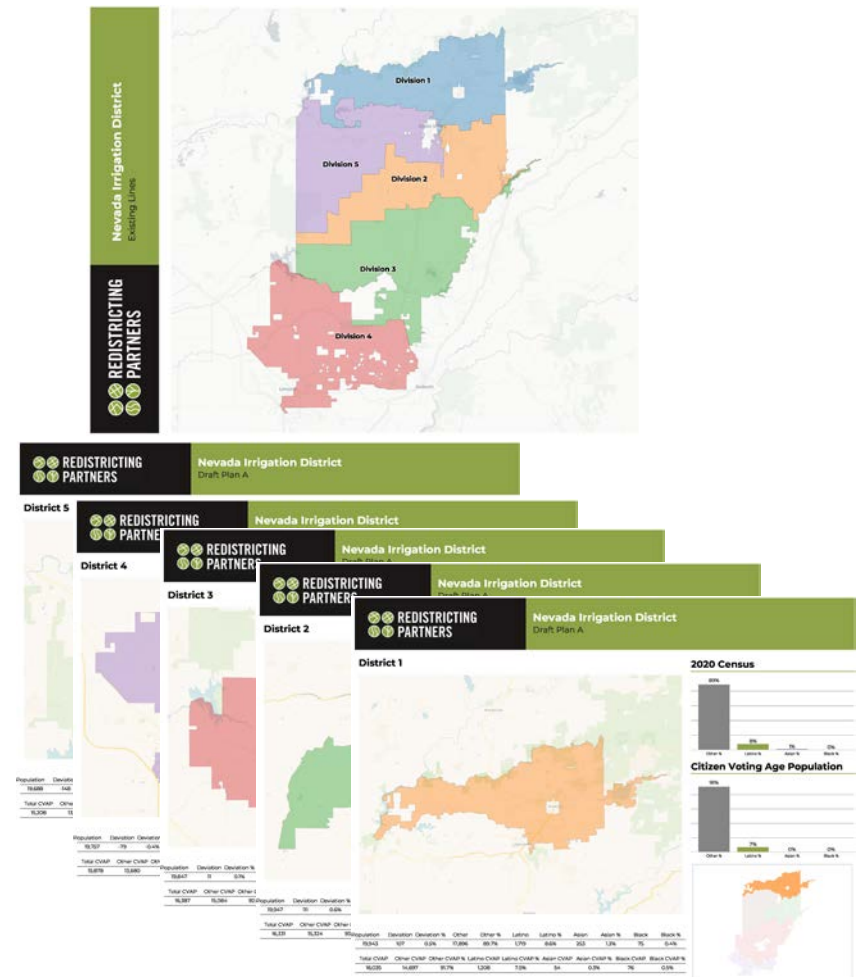


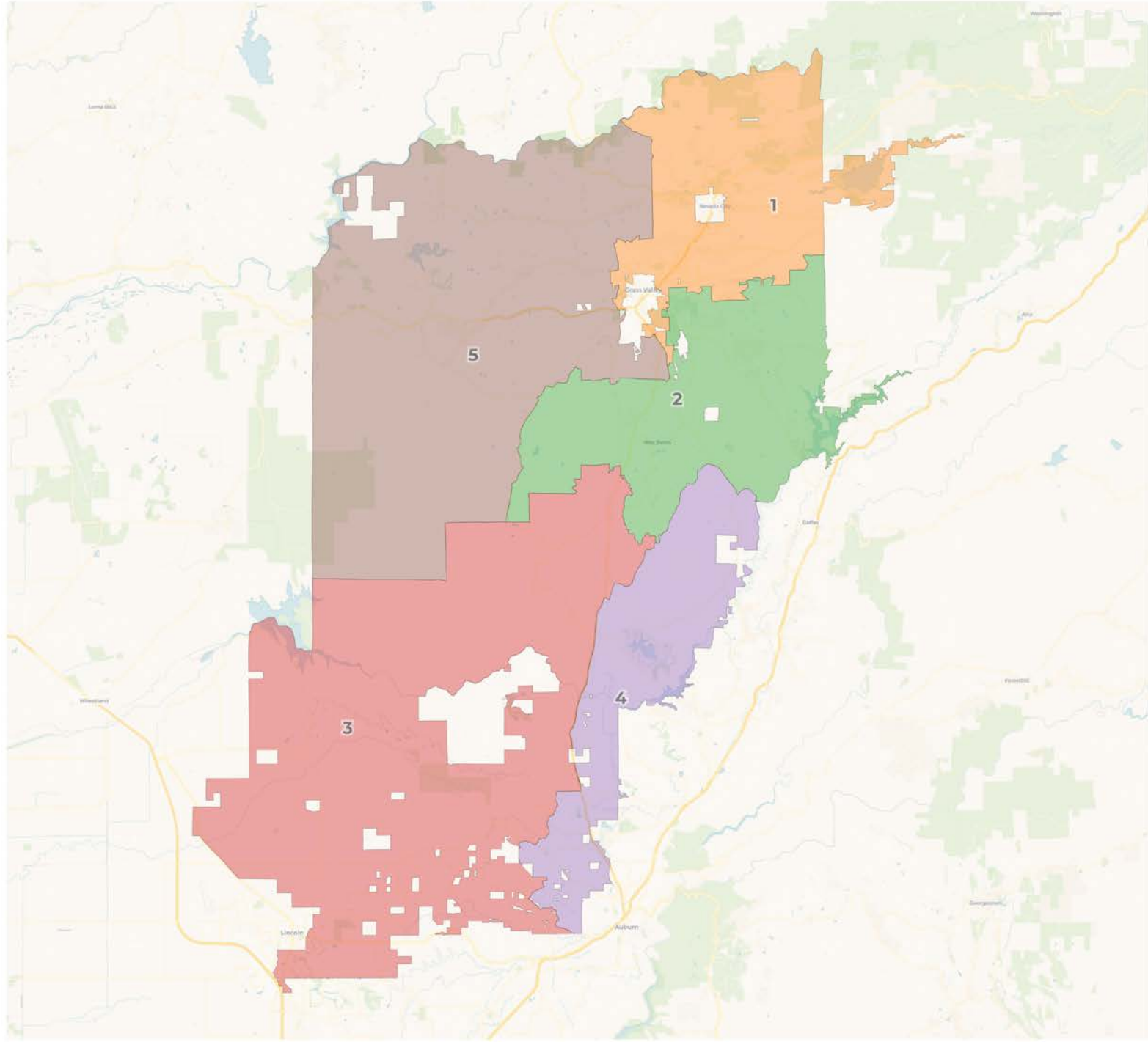


# Draft Map Plans

Each draft plan is provided with both a PDF and Online Web-based format

- Draft Map A– Minimal change
- **Draft Map B – Unifying cities**
- Draft Map C – Revision of A
- Draft Map D – Hybrid of B and C
- Draft Map E – Hybrid of A and B





**2020 Census**

	1	2	3	4	5
Population	19,268	19,856	19,811	19,793	20,454
Deviation	-568	20	-25	-43	618
Deviation %	-2.9%	0.1%	-0.1%	-0.2%	3.1%
Other	17,425	17,996	17,042	16,221	18,189
Other %	90.4%	90.6%	86.0%	82.0%	88.9%
Latino	1,542	1,557	1,998	3,010	1,907
Latino %	8.0%	7.8%	10.1%	15.2%	9.3%
Asian	221	236	582	419	277
Asian %	1.1%	1.2%	2.9%	2.1%	1.4%
Black	80	67	189	143	81
Black %	0.4%	0.3%	1.0%	0.7%	0.4%

**Citizen Voting Age Population (CVAP)**

	1	2	3	4	5
Total CVAP	15,053	16,253	16,851	15,414	16,268
Other CVAP	13,750	15,252	14,783	13,981	14,941
Other CVAP %	91.3%	93.8%	87.7%	90.7%	91.8%
Latino CVAP	1,112	839	1,158	1,139	1,130
Latino CVAP %	7.4%	5.2%	6.9%	7.4%	6.9%
Asian CVAP	64	98	617	255	126
Asian CVAP %	0.4%	0.6%	3.7%	1.7%	0.8%
Black CVAP	127	64	293	39	71
Black CVAP %	0.8%	0.4%	1.7%	0.3%	0.4%

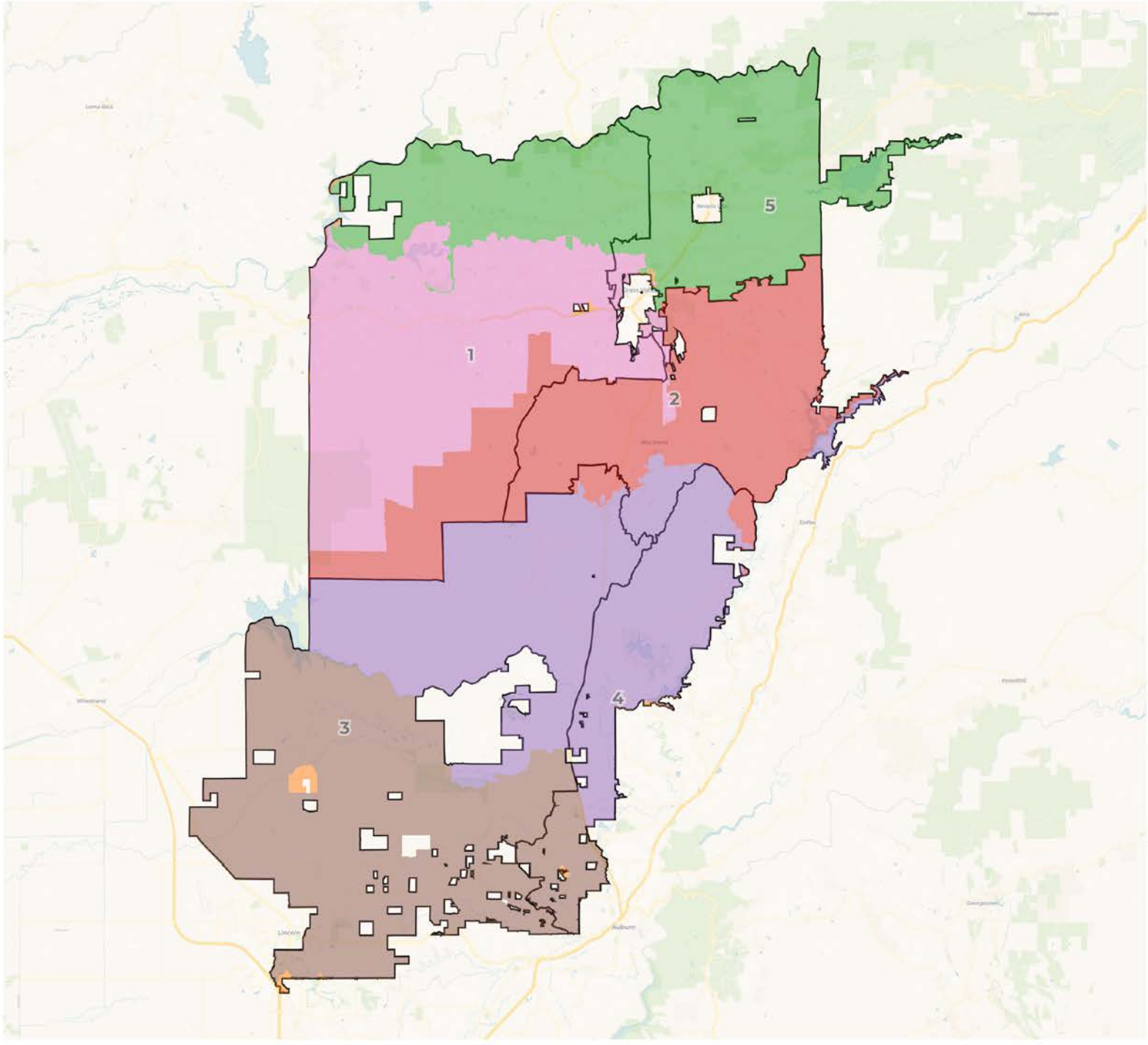
**2020 Census**

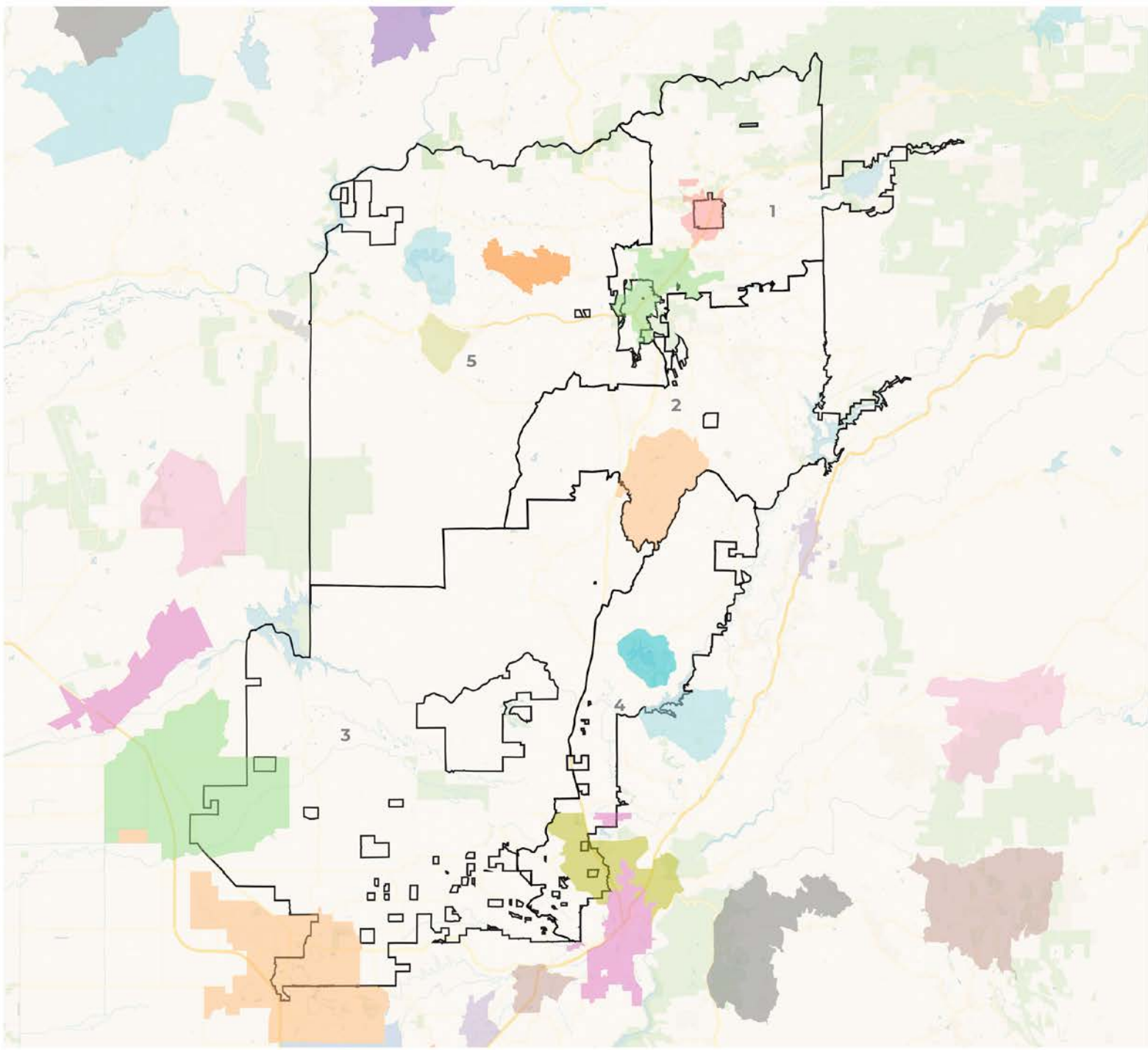
	1	2	3	4	5
Population	19,268	19,856	19,811	19,793	20,454
Deviation	-568	20	-25	-43	618
Deviation %	-2.9%	0.1%	-0.1%	-0.2%	3.1%
Other	17,425	17,996	17,042	16,221	18,189
Other %	90.4%	90.6%	86.0%	82.0%	88.9%
Latino					1,907
Latino %					9.3%
Asian	221	236	582	419	277
Asian %	1.1%	1.2%	2.9%	2.1%	1.4%
Black	80	67	189	143	81
Black %	0.4%	0.3%	1.0%	0.7%	0.4%

**Deviation is 6%**

**Citizen Voting Age Population (CVAP)**

	1	2	3	4	5
Total CVAP	15,053	16,253	16,851	15,414	16,268
Other CVAP	13,750	15,252	14,783	13,981	14,941
Other CVAP %	91.3%	93.8%	87.7%	90.7%	91.8%
Latino CVAP	1,112	839	1,158	1,139	1,130
Latino CVAP %	7.4%	5.2%	6.9%	7.4%	6.9%
Asian CVAP	64	98	617	255	126
Asian CVAP %	0.4%	0.6%	3.7%	1.7%	0.8%
Black CVAP	127	64	293	39	71
Black CVAP %	0.8%	0.4%	1.7%	0.3%	0.4%

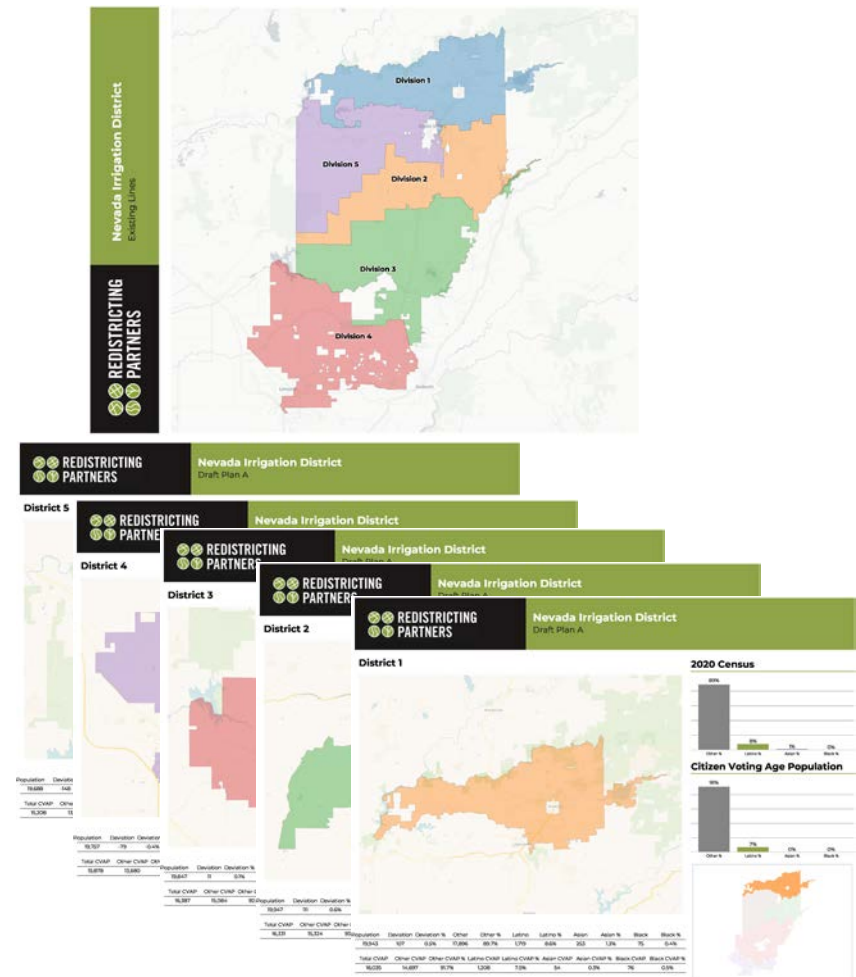




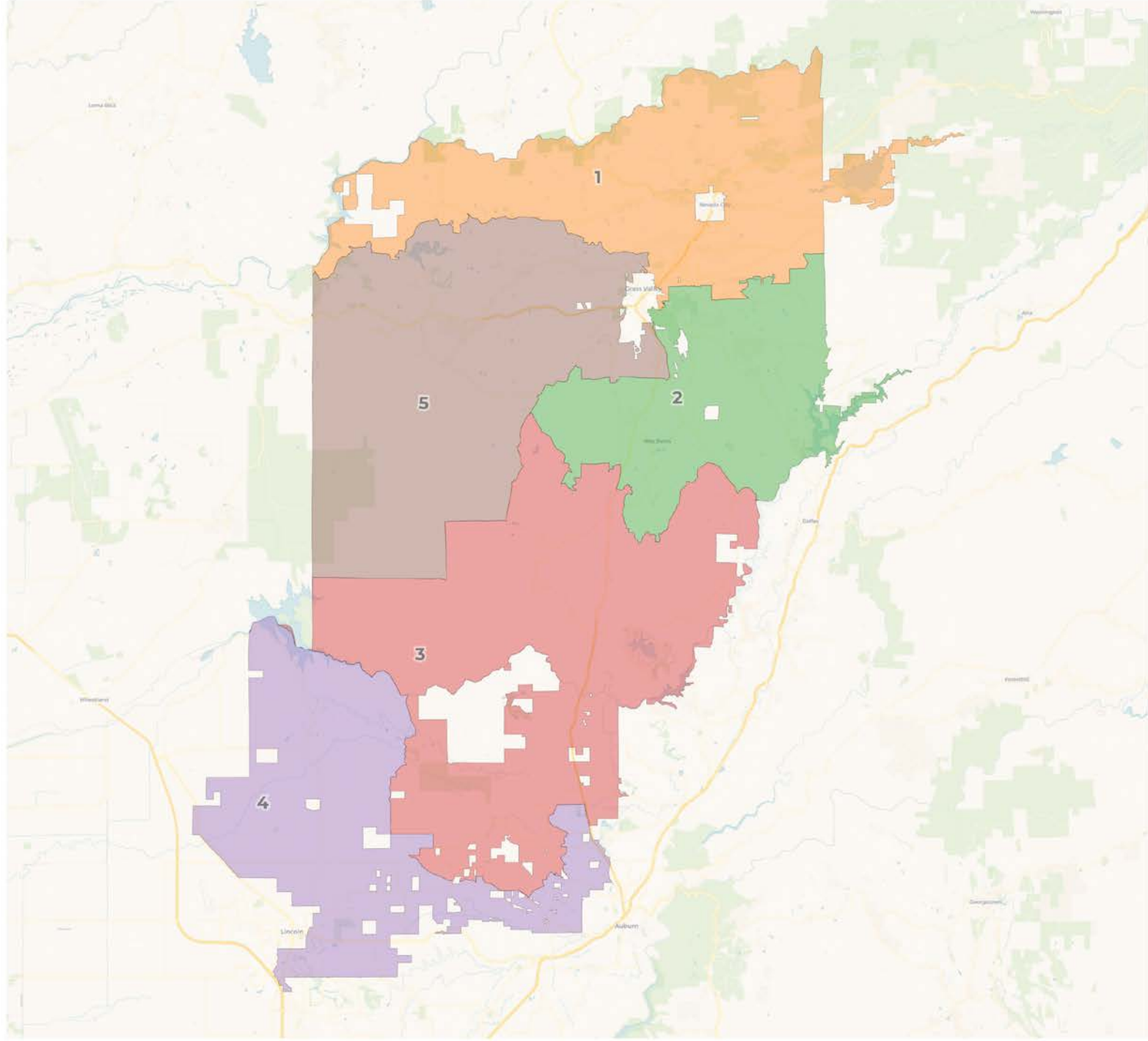
# Draft Map Plans

Each draft plan is provided with both a PDF and Online Web-based format

- Draft Map A– Minimal change
- Draft Map B – Unifying cities
- **Draft Map C – Revision of A**
- Draft Map D – Hybrid of B and C
- Draft Map E – Hybrid of A and B







**2020 Census**

	1	2	3	4	5
Population	19,943	19,621	19,943	20,005	19,688
Deviation	103	-219	103	165	-152
Deviation %	0.5%	-1.1%	0.5%	0.8%	-0.8%
Other	17,896	17,755	17,757	15,840	17,639
Other %	89.7%	90.5%	89.0%	79.2%	89.6%
Latino	1,719	1,559	1,792	3,227	1,721
Latino %	8.6%	7.9%	9.0%	16.1%	8.7%
Asian	253	240	299	701	242
Asian %	1.3%	1.2%	1.5%	3.5%	1.2%
Black	75	67	95	237	86
Black %	0.4%	0.3%	0.5%	1.2%	0.4%

**Citizen Voting Age Population (CVAP)**

	1	2	3	4	5
Total CVAP	16,035	16,045	16,700	15,864	15,208
Other CVAP	14,697	15,039	15,368	13,693	13,922
Other CVAP %	91.7%	93.7%	92.0%	86.3%	91.5%
Latino CVAP	1,208	843	1,165	1,134	1,029
Latino CVAP %	7.5%	5.3%	7.0%	7.1%	6.8%
Asian CVAP	54	99	128	744	135
Asian CVAP %	0.3%	0.6%	0.8%	4.7%	0.9%
Black CVAP	76	64	39	293	122
Black CVAP %	0.5%	0.4%	0.2%	1.8%	0.8%

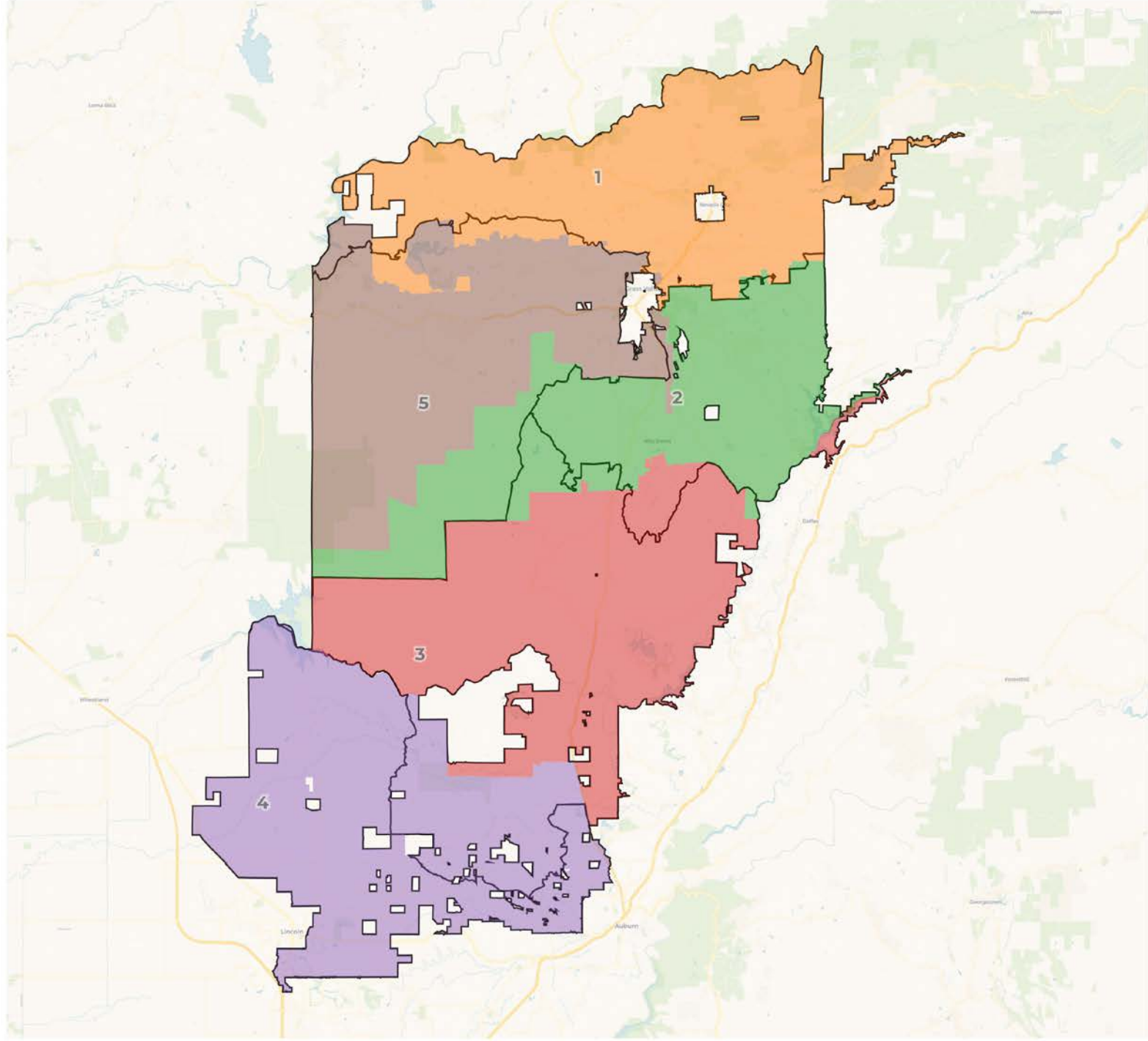
**2020 Census**

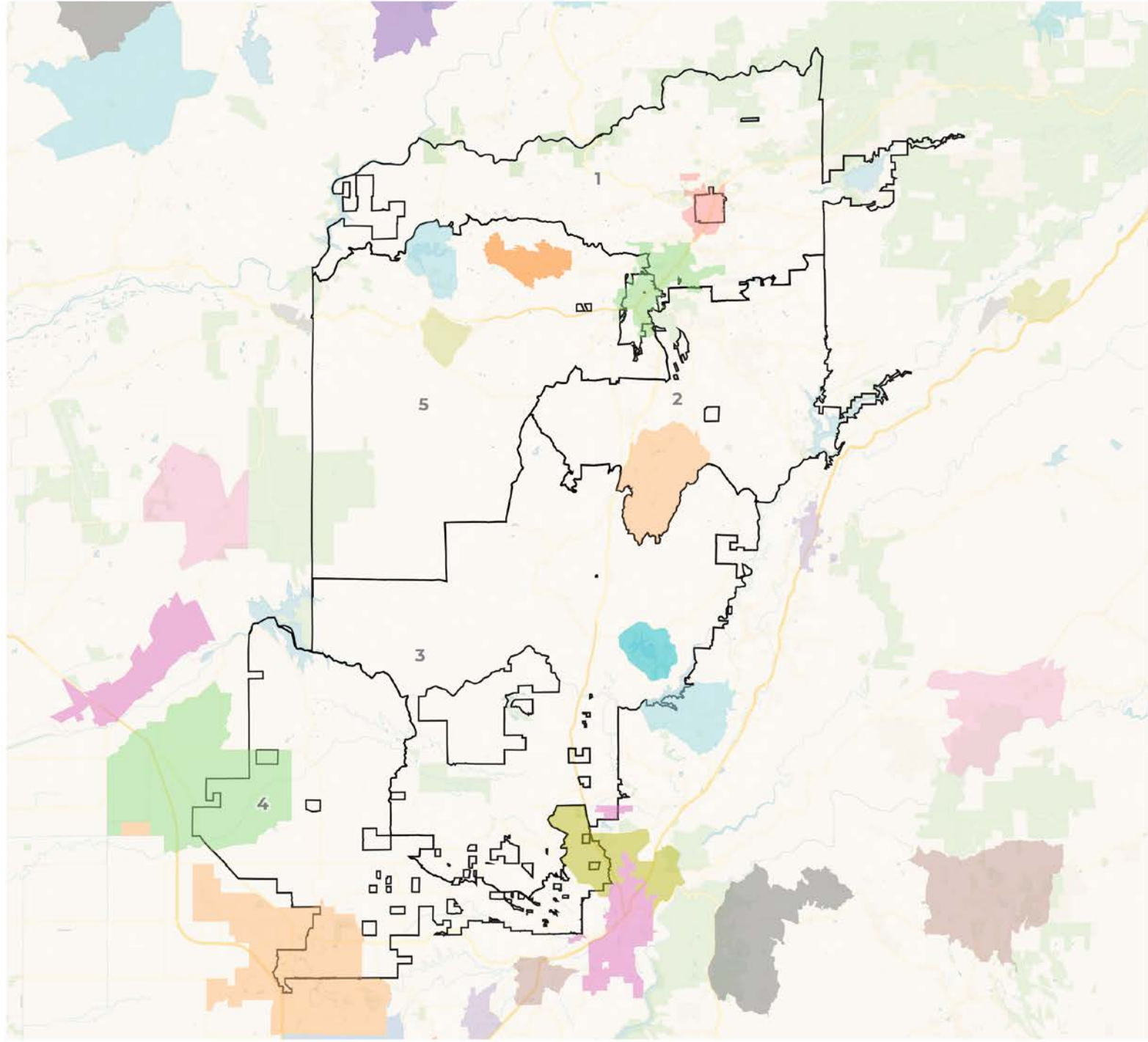
	1	2	3	4	5
Population	19,943	19,621	19,943	20,005	19,688
Deviation	103	-219	103	165	-152
Deviation %	0.5%	-1.1%	0.5%	0.8%	-0.8%
Other	17,896	17,755	17,757	15,840	17,639
Other %	89.7%	90.5%	89.0%	79.2%	89.6%
Latino					1,721
Latino %					8.7%
Asian	253	240	299	701	242
Asian %	1.3%	1.2%	1.5%	3.5%	1.2%
Black	75	67	95	237	86
Black %	0.4%	0.3%	0.5%	1.2%	0.4%

**Deviation is 1.9%**

**Citizen Voting Age Population (CVAP)**

	1	2	3	4	5
Total CVAP	16,035	16,045	16,700	15,864	15,208
Other CVAP	14,697	15,039	15,368	13,693	13,922
Other CVAP %	91.7%	93.7%	92.0%	86.3%	91.5%
Latino CVAP	1,208	843	1,165	1,134	1,029
Latino CVAP %	7.5%	5.3%	7.0%	7.1%	6.8%
Asian CVAP	54	99	128	744	135
Asian CVAP %	0.3%	0.6%	0.8%	4.7%	0.9%
Black CVAP	76	64	39	293	122
Black CVAP %	0.5%	0.4%	0.2%	1.8%	0.8%

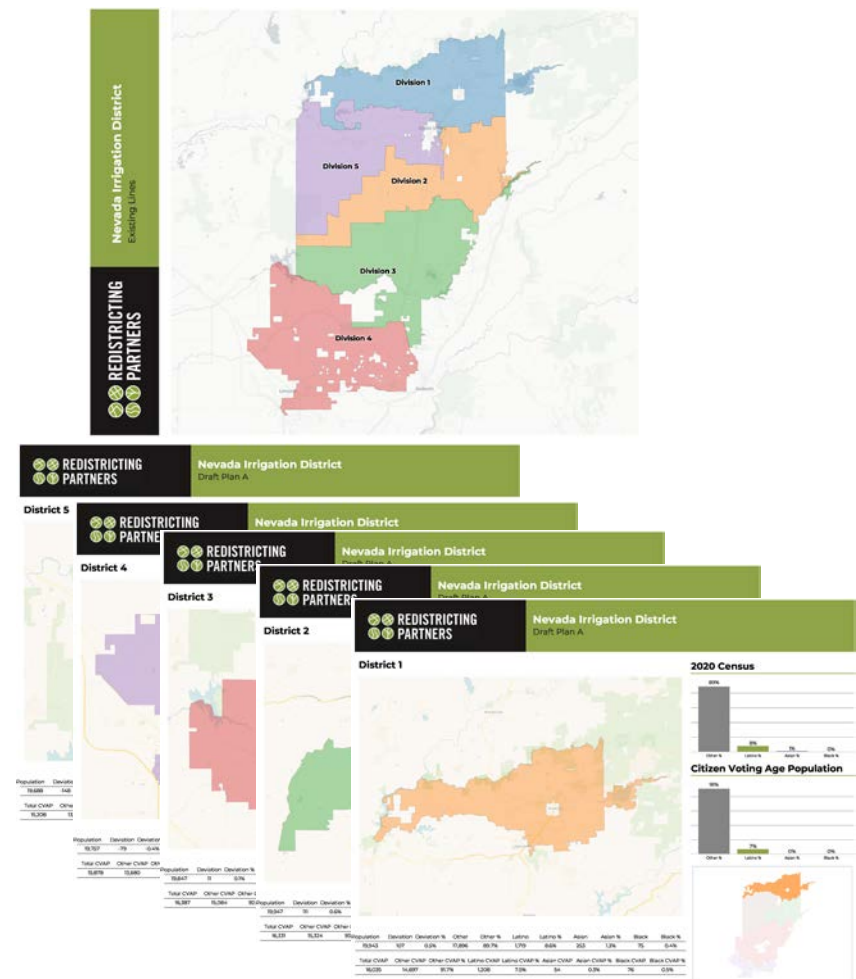


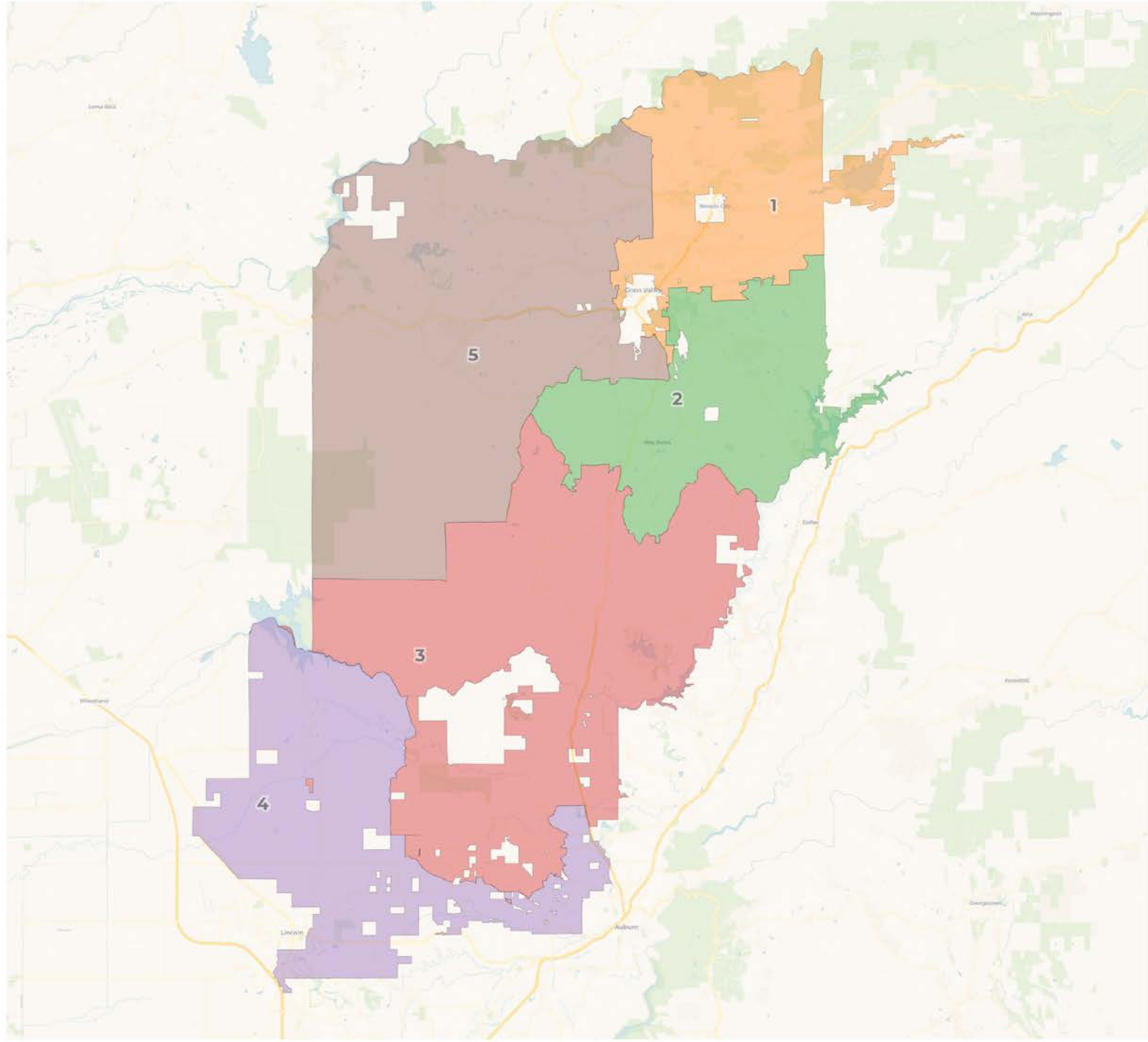


# Draft Map Plans

Each draft plan is provided with both a PDF and Online Web-based format

- Draft Map A– Minimal change
- Draft Map B – Unifying cities
- Draft Map C – Revision of A
- **Draft Map D – Hybrid of B and C**
- Draft Map E – Hybrid of A and B





**2020 Census**

	1	2	3	4	5
Population	20,492	19,492	20,006	19,942	19,268
Deviation	652	-348	166	102	-572
Deviation %	3.3%	-1.8%	0.8%	0.5%	-2.9%
Other	18,225	17,640	17,812	15,785	17,425
Other %	88.9%	90.5%	89.0%	79.2%	90.4%
Latino	1,909	1,548	1,800	3,219	1,542
Latino %	9.3%	7.9%	9.0%	16.1%	8.0%
Asian	277	237	299	701	221
Asian %	1.4%	1.2%	1.5%	3.5%	1.1%
Black	81	67	95	237	80
Black %	0.4%	0.3%	0.5%	1.2%	0.4%

**Citizen Voting Age Population (CVAP)**

	1	2	3	4	5
Total CVAP	16,300	15,935	16,756	15,808	15,053
Other CVAP	14,971	14,937	15,421	13,640	13,750
Other CVAP %	91.8%	93.7%	92.0%	86.3%	91.3%
Latino CVAP	1,132	836	1,168	1,131	1,112
Latino CVAP %	6.9%	5.2%	7.0%	7.2%	7.4%
Asian CVAP	126	98	128	744	64
Asian CVAP %	0.8%	0.6%	0.8%	4.7%	0.4%
Black CVAP	71	64	39	293	127
Black CVAP %	0.4%	0.4%	0.2%	1.9%	0.8%

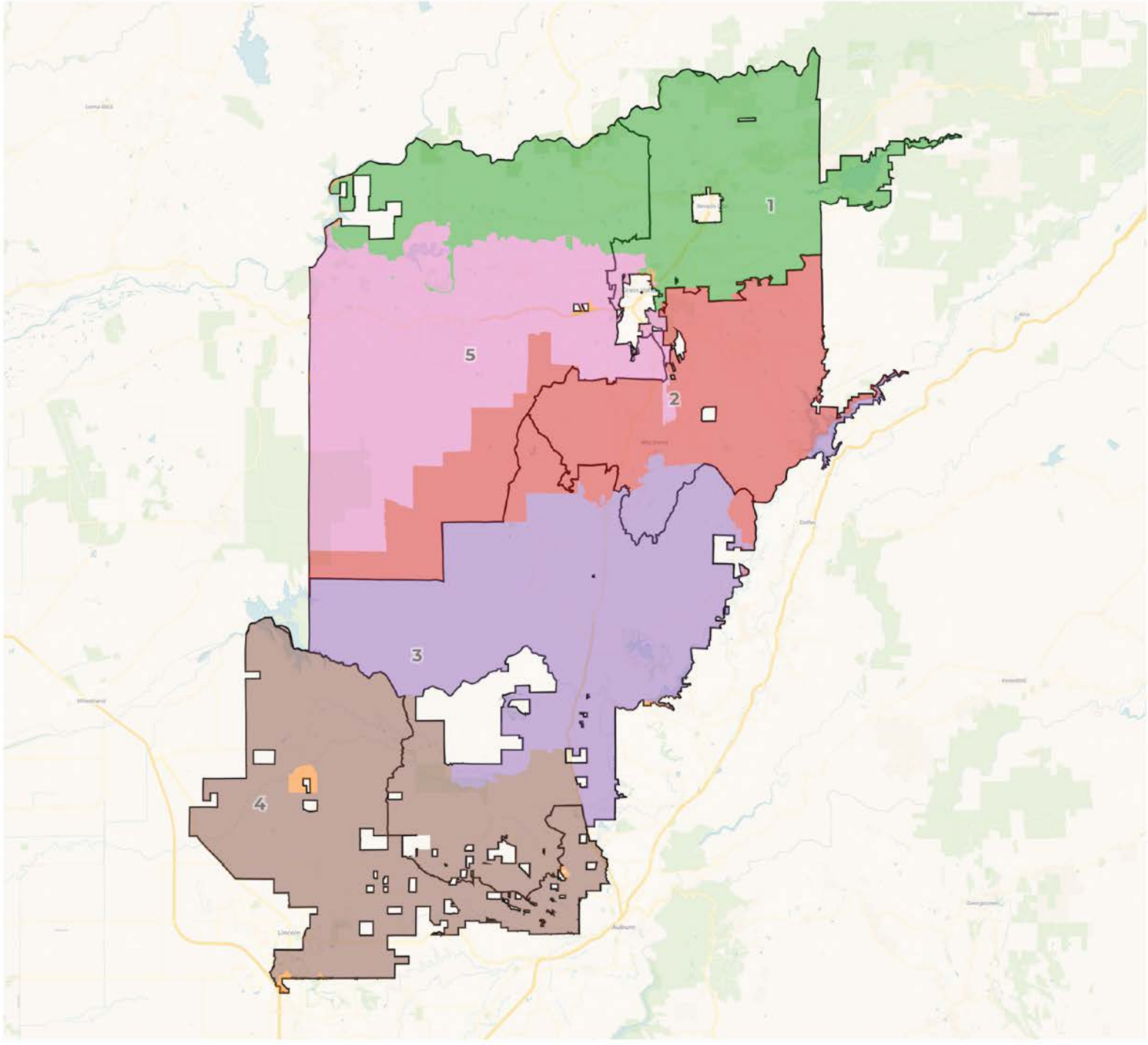


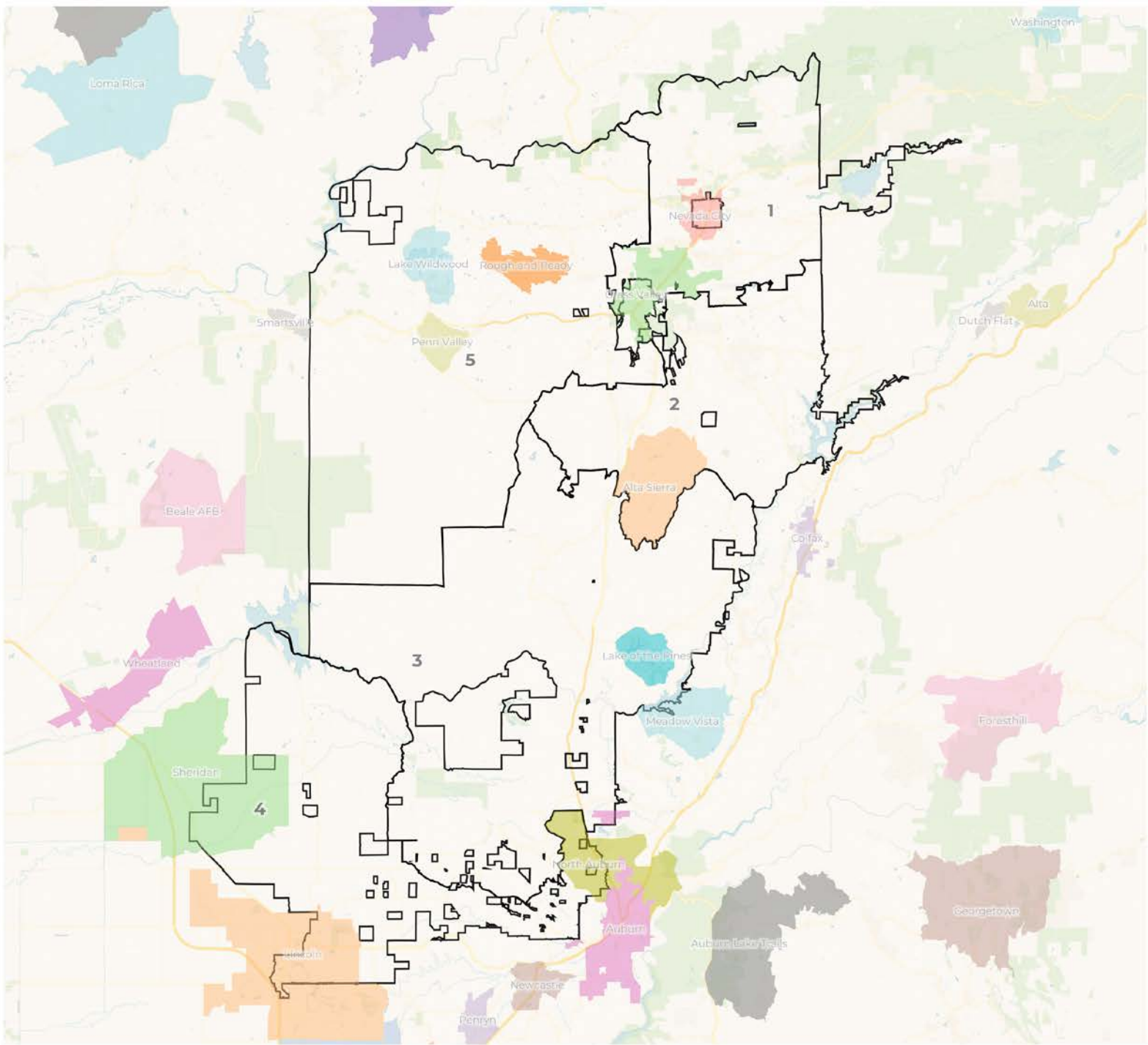
**2020 Census**

	1	2	3	4	5
Population	20,492	19,492	20,006	19,942	19,268
Deviation	652	-348	166	102	-572
Deviation %	3.3%	-1.8%	0.8%	0.5%	-2.9%
Other	18,225	17,640	17,812	15,785	17,425
Other %	88.9%	90.5%	89.0%	79.2%	90.4%
Latino	<b>Deviation is 6.2%</b>				1,542
Latino %					8.0%
Asian	277	237	299	701	221
Asian %	1.4%	1.2%	1.5%	3.5%	1.1%
Black	81	67	95	237	80
Black %	0.4%	0.3%	0.5%	1.2%	0.4%

**Citizen Voting Age Population (CVAP)**

	1	2	3	4	5
Total CVAP	16,300	15,935	16,756	15,808	15,053
Other CVAP	14,971	14,937	15,421	13,640	13,750
Other CVAP %	91.8%	93.7%	92.0%	86.3%	91.3%
Latino CVAP	1,132	836	1,168	1,131	1,112
Latino CVAP %	6.9%	5.2%	7.0%	7.2%	7.4%
Asian CVAP	126	98	128	744	64
Asian CVAP %	0.8%	0.6%	0.8%	4.7%	0.4%
Black CVAP	71	64	39	293	127
Black CVAP %	0.4%	0.4%	0.2%	1.9%	0.8%

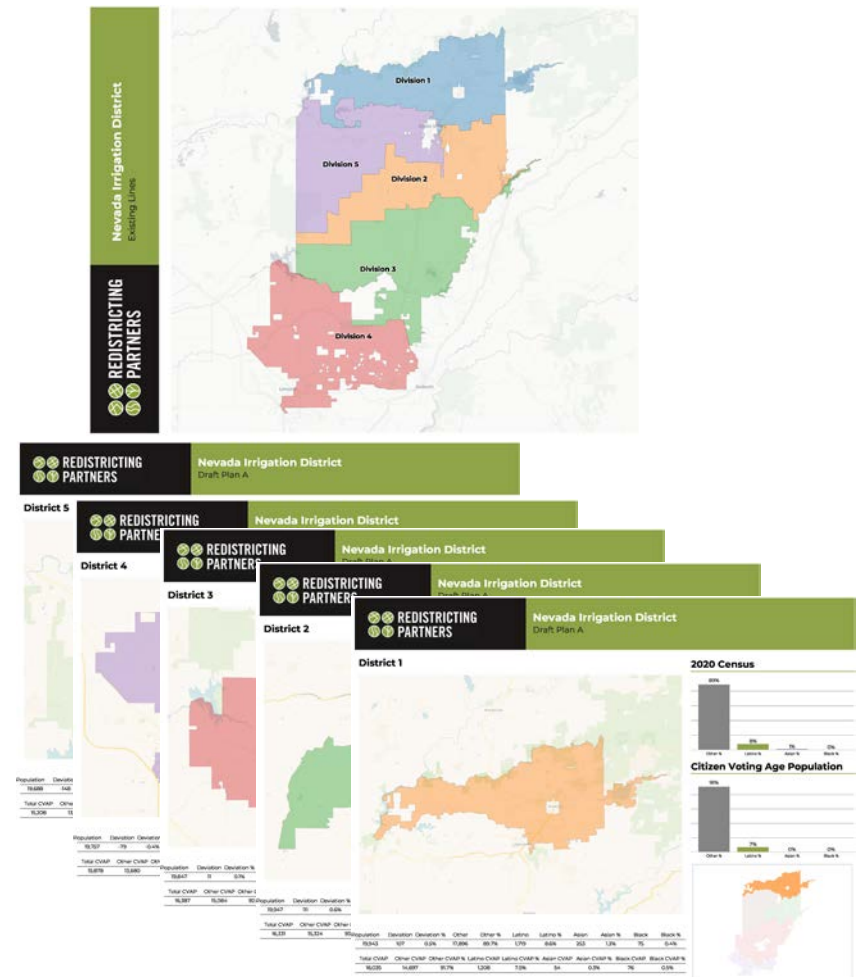


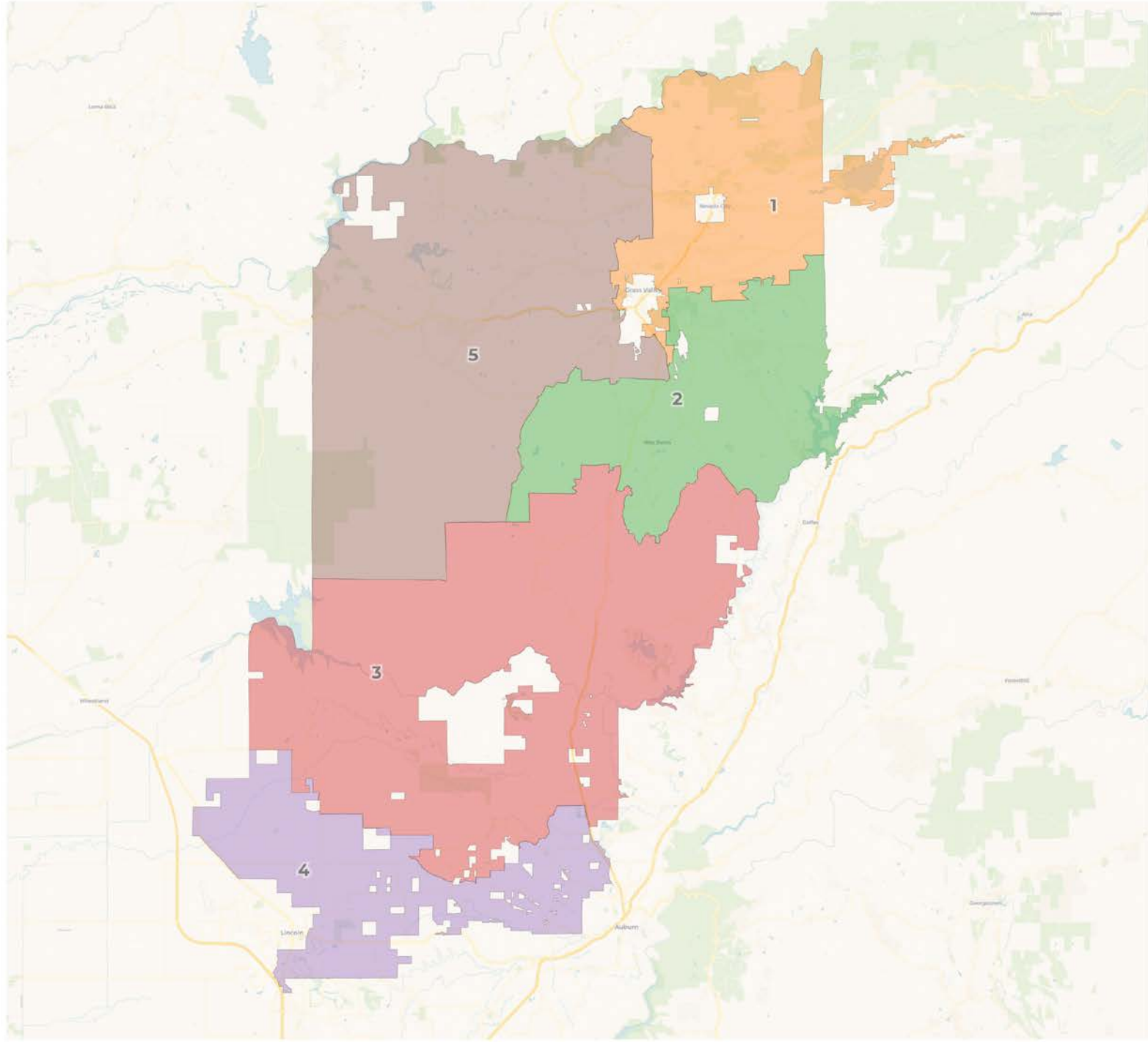


# Draft Map Plans

Each draft plan is provided with both a PDF and Online Web-based format

- Draft Map A– Minimal change
- Draft Map B – Unifying cities
- Draft Map C – Revision of A
- Draft Map D – Hybrid of B and C
- **Draft Map E – Hybrid of A and B**





**2020 Census**

	1	2	3	4	5
Population	20,492	19,885	19,780	19,757	19,268
Deviation	656	49	-56	-79	-568
Deviation %	3.3%	0.2%	-0.3%	-0.4%	-2.9%
Other	18,225	18,010	17,572	15,641	17,425
Other %	88.9%	90.6%	88.8%	79.2%	90.4%
Latino	1,909	1,571	1,814	3,178	1,542
Latino %	9.3%	7.9%	9.2%	16.1%	8.0%
Asian	277	237	301	699	221
Asian %	1.4%	1.2%	1.5%	3.5%	1.1%
Black	81	67	93	239	80
Black %	0.4%	0.3%	0.5%	1.2%	0.4%

**Citizen Voting Age Population (CVAP)**

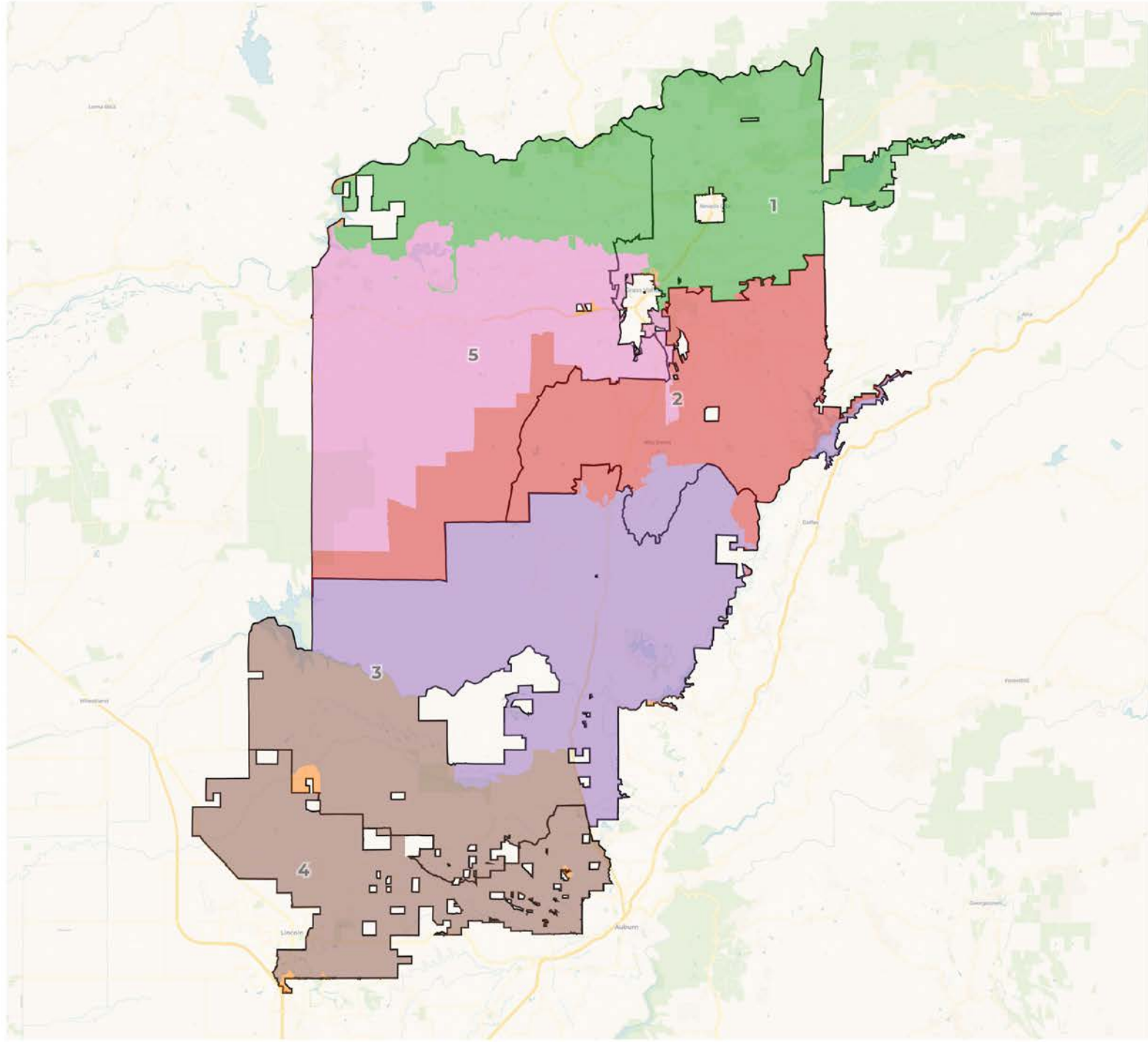
	1	2	3	4	5
Total CVAP	16,300	16,282	16,326	15,878	15,053
Other CVAP	14,971	15,278	15,028	13,680	13,750
Other CVAP %	91.8%	93.8%	92.0%	86.2%	91.3%
Latino CVAP	1,132	842	1,141	1,151	1,112
Latino CVAP %	6.9%	5.2%	7.0%	7.2%	7.4%
Asian CVAP	126	98	111	761	64
Asian CVAP %	0.8%	0.6%	0.7%	4.8%	0.4%
Black CVAP	71	64	46	286	127
Black CVAP %	0.4%	0.4%	0.3%	1.8%	0.8%

**2020 Census**

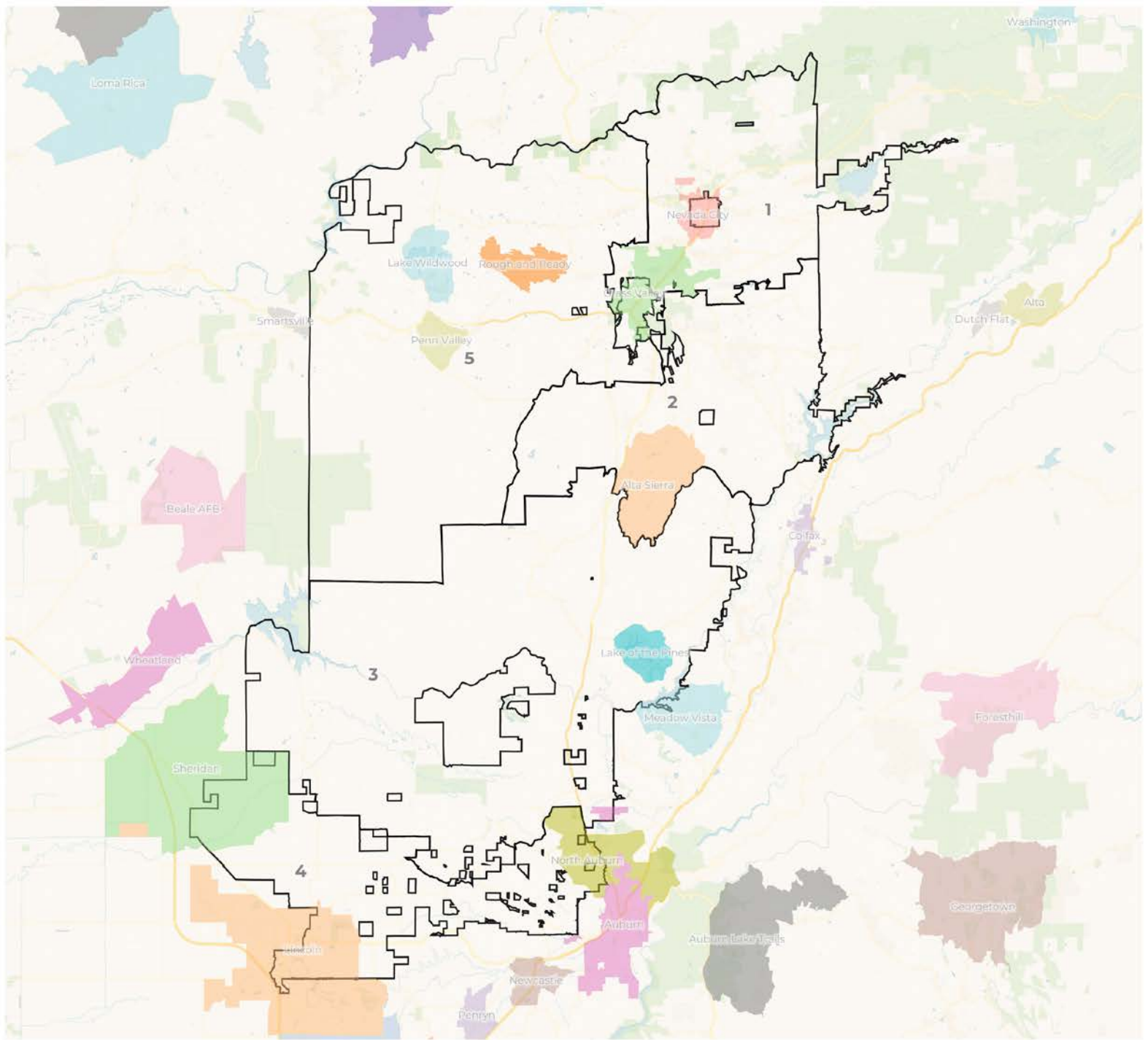
	1	2	3	4	5
Population	20,492	19,885	19,780	19,757	19,268
Deviation	656	49	-56	-79	-568
Deviation %	3.3%	0.2%	-0.3%	-0.4%	-2.9%
Other	18,225	18,010	17,572	15,641	17,425
Other %	88.9%	90.6%	88.8%	79.2%	90.4%
Latino	<b>Deviation is 6.2%</b>				1,542
Latino %					8.0%
Asian	277	237	301	699	221
Asian %	1.4%	1.2%	1.5%	3.5%	1.1%
Black	81	67	93	239	80
Black %	0.4%	0.3%	0.5%	1.2%	0.4%

**Citizen Voting Age Population (CVAP)**

	1	2	3	4	5
Total CVAP	16,300	16,282	16,326	15,878	15,053
Other CVAP	14,971	15,278	15,028	13,680	13,750
Other CVAP %	91.8%	93.8%	92.0%	86.2%	91.3%
Latino CVAP	1,132	842	1,141	1,151	1,112
Latino CVAP %	6.9%	5.2%	7.0%	7.2%	7.4%
Asian CVAP	126	98	111	761	64
Asian CVAP %	0.8%	0.6%	0.7%	4.8%	0.4%
Black CVAP	71	64	46	286	127
Black CVAP %	0.4%	0.4%	0.3%	1.8%	0.8%







# Timeline

January 26, 2022

Draft Maps Presentation

February 2022

Draft Maps Revision

March 2022

Final Vote on Maps



# REDISTRICTING PARTNERS